

**SIX MONTH SURVEILLANCE  
HOMOGENEOUS ACBM RECORDS**

Date of Inspection: 06/07/2005

District: Chico Unified School District

Inspector: Leroy Christophersen

School: Bidwell Junior High School

Building: F (FKA 600)

Material Class	Material	Homo. Mat. #	% Asb.	Ft <sup>2</sup> /L.F.	Location	Condition: Code & Comments	Friable Yes/No
T	MUDDED JOINTS	1	1-5%	UNDETERMINED	CLASSROOM 109 NEAR THE SINK	(1)	N
S	ACOUSTICAL CEILING & UPPER WALL PLASTER	6	1-5 %	UNDETERMINED	ALL ROOMS	(1) (4) ROUGH TEXTURE PLASTER.	N
M	12" VFT	93	ASSUMED	UNDETERMINED	CLASSROOM 208 & 109	(1) (4)	N
M	9" VFT	95	ASSUMED	160 S	OFFICE & CLASSROOM 108	(1) (4) (7) CLASSROOM 109 & 209 HAVE BARE CONCRETE FLOORING.	N N/A
M	TRANSITE PANEL	98	ASSUMED	UNDETERMINED	METAL SHOP (ROOM 109 & 209)	(1) (4)	N
M	2' X 4' FCP'S	102	ASSUMED <sup>1</sup> -5 % <sup>900</sup> S	UNDETERMINED	CLASSROOM 108	(1) (4)	N
M	12" VFT	104	ASSUMED	UNDETERMINED	CLASSROOM 109	(1) (4) (7) CLASSROOM 109 HAS BARE CONCRETE FLOORING.	N N/A
M	12" ACT	105	ASSUMED	UNDETERMINED	CLASSROOM 209 & 109	(1) (4) 12" ACT ARE LOCATED ON THE CEILING.  (2) ROOM 109, OVER SINK WATER DAMAGE	N

**CONDITION CODE**

**General Condition:** (1) Good (2) Damaged (3) Significantly Damaged (25% or more)  
**Change in Condition:** (4) No (5) Yes (If Yes, explain under comments)  
**Abated:** (6) Repaired (7) Removed (8) Encapsulated (9) Enclosed (10) Isolated & Restricted  
**Miscellaneous:** (11) Inaccessible, no inspection data (12) Other (Explain under comments) (13) Non-Asbestos/Not Inspected  
 (14) Non AHERA/Not Inspected

**CONSULT ORIGINAL AND SUPPLEMENTARY INSPECTION REPORTS FOR MATERIALS WITH TRACE AMOUNTS OF ASBESTOS**

**SIX MONTH SURVEILLANCE  
HOMOGENEOUS ACBM RECORDS**

Date of Inspection: 06/07/2005

District: Chico Unified School District

Inspector: Leroy Christophersen

School: Bidwell Junior High School

Unit: I (FKA 700)

Material Class	Material	Homo. Mat. #	% Asb.	Ft <sup>2</sup> /L.F.	Location	Condition: Code & Comments	Friable Yes/No
M	MUDDED JOINTS	1	1-5%	UNDETERMINED	CLASSROOMS 408 & 409	(11) ABATEMENT IN PROCESS 06/2005	N/A
M	ACOUSTICAL CEILING & UPPER WALL PLASTER	6	1-5%	UNDETERMINED	ALL CLASSROOMS <b>NOT IN THIS WING</b>	(1) (4) ROUGH TEXTURE PLASTER. (12) NO ACOUSTICAL CEILING TILES IN THE ENTIRE WING	N
M	2' X 4' FCP'S	106	NONE DETECTED	UNDETERMINED	CLASSROOMS 308, 309, 408, 408A, AND 409	(13) REPRESENTED BY SAMPLES HMS-R1304-40A & B COLLECTED ON 4-5-04. (1) (5) WATER DAMAGE. - REPAIRED 2004 UNIT I	N/A
M	GYPSUM BOARD & JOINT COMPOUND	154	ASSUMED	300 S	THROUGHOUT	(1) DAMAGED IN WASH ROOM.	N
M	9" VFT	300	ASSUMED	UNDETERMINED	ALL CLASSROOMS	(7) REMOVED JUNE 2005	N
S	WALL PLASTER	500	NONE DETECTED	350 S	GIRL'S RESTROOM	(13) REPRESENTED BY SAMPLE HMS-R1304-02 COLLECTED ON 3-30-04.	N/A

**CONDITION CODE**

General Condition: (1) Good (2) Damaged (3) Significantly Damaged (25% or more)

Change in Condition: (4) No (5) Yes (If Yes, explain under comments)

Abated: (6) Repaired (7) Removed (8) Encapsulated (9) Enclosed (10) Isolated & Restricted

Miscellaneous: (11) Inaccessible, No inspection data (12) Other (Explain under comments) (13) Non-Asbestos/Not Inspected

**CONSULT ORIGINAL AND SUPPLEMENTARY INSPECTION REPORTS FOR MATERIALS WITH TRACE AMOUNTS OF ASBESTOS**

**SIX MONTH SURVEILLANCE  
HOMOGENEOUS ACBM RECORDS**

Date of Inspection: 12/15/2005

District: Chico Unified School District

Inspector: Leroy Christophersen

School: Bidwell Junior High School

Building: L (FKA 900)

Material Class	Material	Homo. Mat. #	% Asb.	Ft <sup>2</sup> /L.F.	Location	Condition: Code & Comments	Friable Yes/No
T	PIPE WRAP STRAIGHT	17	15-20%	UNDETERMINED	GYM & STOREROOM	(1) (4)	N
T	PIPE WRAP CORNER	18	5-10%	UNDETERMINED	GYM, BOILER ROOM, AND STOREROOM	(1) (4)	N
M	12" ACT	111	ASSUMED	UNDETERMINED	GYM	(5) (6) <del>SOME TILES HAVE BEEN REMOVED. THE MASTIC IS SHOWING.</del>  THE WALLS ARE CONCRETE & THE CEILING IS METAL.	N

**CONDITION CODE**

General Condition: (1) Good (2) Damaged (3) Significantly Damaged (25% or more)

Change in Condition: (4) No (5) Yes (If Yes, explain under comments)

Abated: (6) Repaired (7) Removed (8) Encapsulated (9) Enclosed (10) Isolated & Restricted

Miscellaneous: (11) Inaccessible, No inspection data (12) Other (Explain under comments) (13) Non-Asbestos/Not Inspected

**CONSULT ORIGINAL AND SUPPLEMENTARY INSPECTION REPORTS FOR MATERIALS WITH TRACE AMOUNTS OF ASBESTOS**

**SIX MONTH SURVEILLANCE  
HOMOGENEOUS ACBM RECORDS**

Date of Inspection: 06/07/2005

District: Chico Unified School District

Inspector: Leroy Christophersen

School: Bidwell Junior High School

Building: C & D

Material Class	Material	Homo. Mat. #	% Asb.	Ft <sup>2</sup> /L.F.	Location	Condition: Code & Comments	Friable Yes/No
M	ACOUSTICAL CEILING & UPPER WALL PLASTER	5	1-5 %	UNDETERMINED	ALL ROOMS, CLOSET (C), CLASSROOM 204, HALLWAY, CLASSROOM 250, AND GIRLS RESTROOM	(12) CANNOT LOCATE ACOUSTICAL TILES	N
M	ACOUSTICAL CEILING & UPPER WALL PLASTER	6	1-5%	UNDETERMINED	HALLWAY 300	(1) (4) ROUGH TEXTURE PLASTER. (12) ACOUSTICAL TILES NOT FOUND	N
M	DRYWALL	90	ASSUMED	UNDETERMINED	CLASSROOMS 250 & 307 AND RESTROOM	(13) REPRESENTED BY SAMPLE HMS-R1304-03 COLLECTED ON 3-30-04.	N/A
M	9" VFT	95	ASSUMED	UNDETERMINED	ALL ROOMS, HALLWAY 200, CLASSROOM 250, AND GIRLS RESTROOM	(7) MODERNIZATION 2004 REPLACED W/12" VFT BRN	N
M	12" VFT	104	ASSUMED	UNDETERMINED	CLASSROOMS 105-107	(7) MODERNIZATION 2004 REPLACED W/12" VFT BLUE & WHITE	N/A
M	12" ACT	105	ASSUMED	4,500 S	CLASSROOMS 105-107, 206, AND 207	(7) REPLACED WITH NEW CEILING TILES 2005	N
M	TRANSITE PIPE	107	ASSUMED	UNDETERMINED	CLOSET OF CLASSROOM 405	(1) (4)	N
M	12" ACT MASTIC	151	ASSUMED	<10 S	CLASSROOM 306	(7) REPAIRED PER 11/4/04 INSPECTION	N
M	9" VFT	300	ASSUMED	UNDETERMINED	HALLWAY 300	(7) REPLACED WITH 12" VFT BLUE & WHITE	N

**CONDITION CODE**

General Condition: (1) Good (2) Damaged (3) Significantly Damaged (25% or more)

Change in Condition: (4) No (5) Yes (If Yes, explain under comments)

Abated: (6) Repaired (7) Removed (8) Encapsulated (9) Enclosed (10) Isolated & Restricted

Miscellaneous: (11) Inaccessible, No inspection data (12) Other (Explain under comments) (13) Non-Asbestos/Not Inspected

**CONSULT ORIGINAL AND SUPPLEMENTARY INSPECTION REPORTS FOR MATERIALS WITH TRACE AMOUNTS OF ASBESTOS**

**SIX MONTH SURVEILLANCE  
HOMOGENEOUS ACBM RECORDS**

Date of Inspection: 06/07/2005

District: Chico Unified School District

Inspector: Leroy Christophersen

School: Bidwell Junior High School

Building: B (FKA 800)

Material Class	Material	Homo. Mat. #	% Asb.	Ft <sup>2</sup> /L.F.	Location	Condition: Code & Comments	Friable Yes /No
M	9" VFT	95	ASSUMED	UNDETERMINED	LIBRARY	(1) (4)	N
M	12" ACT	109	ASSUMED	UNDETERMINED	LIBRARY, OFFICES, AND AUDIO VISUAL	(1) (4)	N
M	PLASTER	110	ASSUMED	UNDETERMINED	THROUGHOUT THE UNIT	(1) (4) SMOOTH WALL PLASTER.	N
M	BUR UNDER GRAVEL	501	NONE DETECTED	4,000 S	LIBRARY	(13) REPRESENTED BY SAMPLES HMS-R1304-36A & B COLLECTED ON 4-5-04.	N/A

**CONDITION CODE**

General Condition: (1) Good (2) Damaged (3) Significantly Damaged (25% or more)

Change in Condition: (4) No (5) Yes (If Yes, explain under comments)

Abated: (6) Repaired (7) Removed (8) Encapsulated (9) Enclosed (10) Isolated & Restricted

Miscellaneous: (11) Inaccessible, No inspection data (12) Other (Explain under comments) (13) Non-Asbestos/Not Inspected

**CONSULT ORIGINAL AND SUPPLEMENTARY INSPECTION REPORTS FOR MATERIALS WITH TRACE AMOUNTS OF ASBESTOS**

**SIX MONTH SURVEILLANCE  
HOMOGENEOUS ACBM RECORDS**

Date of Inspection: 06/07/2005

District: Chico Unified School District

Inspector: Leroy Christophersen

School: Bidwell Junior High School

Unit: A

Material Class	Material	Homo. Mat. #	% Asb.	Ft <sup>2</sup> /L.F.	Location	Condition: Code & Comments	Friable Yes/No
T	PIPEWRAP STRAIGHT	8	30-35%	UNDETERMINED	CHAIR STORAGE ROOM	(7) REMOVED MARCH 2005	N
M	FAN VENT INSULATION	94	ASSUMED	UNDETERMINED	FAN ROOMS	(12) COULD NOT FIND THIS ROOM .	N
M	TRANSITE PIPE	99	ASSUMED	UNDETERMINED	KITCHEN AND BOILER ROOM	(1) (4)	N
M	DRYWALL	103	ASSUMED	UNDETERMINED	KITCHEN	(1) (4)	N
M	9" VFT	104	ASSUMED	UNDETERMINED	MULTI-USE & KITCHEN	(2) KITCHEN NEAR SINK & NURSES OFFICE TILE BEHIND DOOR LOOSE	N
T	BOILER	152	ASSUMED	1 UNIT	BOILER ROOM	(1) (4)	N
T	6" OD PIPE WRAP	153	ASSUMED	50 L	BOILER ROOM	(1) (4)	N
M	BUR UNDER GRAVEL	501	NONE DETECTED	3,000 S	EAST OVERHANG OF MULTI-USE	(13) REPRESENTED BY SAMPLES HMS-R1304-35A-C COLLECTED ON 4-5-04.	N/A
M	GRAY ROOF MASTIC	502	5-10% CHRYSOTILE	250 S	EAST OVERHANG OF MULTI-USE	(1) (4) REPRESENTED BY SAMPLES 32A & B COLLECTED ON 4-5-04.	N
S	WALL PLASTER	503	NONE DETECTED	UNDETERMINED	THROUGHOUT	(13) REPRESENTED BY SAMPLES CUSD BDS1-5 ON 05/17/2005	N/A

**CONDITION CODE**

General Condition: (1) Good (2) Damaged (3) Significantly Damaged (25% or more)

Change in Condition: (4) No (5) Yes (If Yes, explain under comments)

Abated: (6) Repaired (7) Removed (8) Encapsulated (9) Enclosed (10) Isolated & Restricted

Miscellaneous: (11) Inaccessible, No inspection data (12) Other (Explain under comments) (13) Non-Asbestos/Not Inspected

**CONSULT ORIGINAL AND SUPPLEMENTARY INSPECTION REPORTS FOR MATERIALS WITH TRACE AMOUNTS OF ASBESTOS**

**SIX MONTH SURVEILLANCE  
HOMOGENEOUS ACBM RECORDS**

Date of Inspection: 06/07/2005

District: Chico Unified School District

Inspector: Leroy Christophersen

School: Bidwell Junior High School

Building: J (FKA 500)

Material Class	Material	Homo. Mat. #	% Asb.	Ft <sup>2</sup> /L.F.	Location	Condition: Code & Comments	Friable Yes/No
M	9" VFT	95	ASSUMED	UNDETERMINED	ALL ROOMS	(7) MODERNIATION 2004	N
M	DRYWALL	100	1%	UNDETERMINED	ALL ROOMS	(7) MODERNIATION 2004	N
M	12" ACT	108	ASSUMED NON ASBESTOS	UNDETERMINED	CLASSROOMS 501& 502, OFFICE, AND PRACTICE ROOMS	(12) HMS REPORTED NON ASBESTOS & DID NOT NEED TO BE REMOVED	N
T	DUCT INSULATION	109	90-95%	UNDETERMINED	DUCT WORK-CEILING AND WALLS	(7)	N
M	BUR UNDER GRAVEL	501	NONE DETECTED	200 S	NORTH END, SOUTH END, AND MIDDLE	(13) REPRESENTED BY SAMPLES 34A-C COLLECTED ON 4-5-04. N/A	
M	GRAY ROOF MASTIC	502	5-10% CHRYSOTILE	3,200 S	EXHAUST FAN ROOF JACK	(7) MODERNIATION PROJECT 2004	N
	12" VFT		NON ASBESTOS		ALL ROOMS – BLUE & WHITE COLOR	(13)	

**CONDITION CODE**

- General Condition: (1) Good (2) Damaged (3) Significantly Damaged (25% or more)  
Change in Condition: (4) No (5) Yes (If Yes, explain under comments)  
Abated: (6) Repaired (7) Removed (8) Encapsulated (9) Enclosed (10) Isolated & Restricted  
Miscellaneous: (11) Inaccessible, No inspection data (12) Other (Explain under comments) (13) Non-Asbestos/Not Inspected

**CONSULT ORIGINAL AND SUPPLEMENTARY INSPECTION REPORTS FOR MATERIALS WITH TRACE AMOUNTS OF ASBESTOS**

**SIX MONTH SURVEILLANCE  
HOMOGENEOUS ACBM RECORDS**

Date of Inspection: 06/07/2005

District: Chico Unified School District

Inspector: Leroy Christophersen

School: Bidwell Junior High School

Building: K (FKA 400)

Material Class	Material	Homo. Mat. #	% Asb.	Ft <sup>2</sup> /L.F.	Location	Condition: Code & Comments	Friable Yes/No
T	PIPE INSULATION & MUDDER FITTINGS	14	NONE DETECTED	UNDETERMINED	PE BOILER ROOM & TUNNEL	(7) MODERNIATION PROJECT 2004	N/A
T	TANK WRAP	15	NONE DETECTED	UNDETERMINED	PE BOILER ROOM	(13) REPRESENTED BY SAMPLES HMS-R1304-39A-G COLLECTED ON 4-13-04	N/A
M	TRANSITE PANELS	98	ASSUMED	UNDETERMINED	PANELS IS BOTH LOCKER ROOMS	(7)	N
M	BUR UNDER GRAVEL	501	NONE DETECTED	250 S	BOY'S AND GIRL'S LOCKER ROOM	(13) REPRESENTED BY SAMPLES HMS-R1304-31A-C AND 33A-C COLLECTED ON 4-5-04.	N/A
S	WALL PLASTER	504	NONE DETECTED	5,000 S	COACHES ROOM 112	(13) REPRESENTED BY SAMPLE HMS-R1304-01 COLLECTED ON 3-30-04.	N/A
T	BOILER INSULATION	505	ASSUMED	20 S	BOILER ROOM	(7) MODERNIATION PROJECT 2004	Y

**CONDITION CODE**

General Condition: (1) Good (2) Damaged (3) Significantly Damaged (25% or more)

Change in Condition: (4) No (5) Yes (If Yes, explain under comments)

Abated: (6) Repaired (7) Removed (8) Encapsulated (9) Enclosed (10) Isolated & Restricted

Miscellaneous: (11) Inaccessible, No inspection data (12) Other (Explain under comments) (13) Non-Asbestos/Not Inspected

**CONSULT ORIGINAL AND SUPPLEMENTARY INSPECTION REPORTS FOR MATERIALS WITH TRACE AMOUNTS OF ASBESTOS**



**SIX MONTH SURVEILLANCE  
HOMOGENEOUS ACBM RECORDS**

Date of Inspection: 06/07/2005

District: Chico Unified School District

Inspector: Leroy Christophersen

School: Bidwell Junior High School

Building: L (FKA 900)

Material Class	Material	Homo. Mat. #	% Asb.	Ft <sup>2</sup> /L.F.	Location	Condition: Code & Comments	Friable Yes/No
T	PIPE WRAP STRAIGHT	17	15-20%	UNDETERMINED	GYM & STOREROOM	(1) (4)	N
T	PIPE WRAP CORNER	18	5-10%	UNDETERMINED	GYM, BOILER ROOM, AND STOREROOM	(1) (4)	N
M	12" ACT	111	ASSUMED	UNDETERMINED	GYM	(2) SOME TILES HAVE BEEN REMOVED. THE MASTIC IS SHOWING.  THE WALLS ARE CONCRETE & THE CEILING IS METAL.	N

**CONDITION CODE**

General Condition: (1) Good (2) Damaged (3) Significantly Damaged (25% or more)

Change in Condition: (4) No (5) Yes (If Yes, explain under comments)

Abated: (6) Repaired (7) Removed (8) Encapsulated (9) Enclosed (10) Isolated & Restricted

Miscellaneous: (11) Inaccessible, No inspection data (12) Other (Explain under comments) (13) Non-Asbestos/Not Inspected

**CONSULT ORIGINAL AND SUPPLEMENTARY INSPECTION REPORTS FOR MATERIALS WITH TRACE AMOUNTS OF ASBESTOS**

**SIX MONTH SURVEILLANCE  
HOMOGENEOUS ACBM RECORDS**

Date of Inspection: 12/15/2005

District: Chico Unified School District

Inspector: Leroy Christophersen

School: Bidwell Junior High School

Building: F (FKA 600)

Material Class	Material	Homo. Mat. #	% Asb.	Ft <sup>2</sup> /L.F.	Location	Condition: Code & Comments	Friable Yes/No
T	MUDDED JOINTS	1	1-5%	UNDETERMINED	CLASSROOM 109 NEAR THE SINK	(1) (4)	N
S	ACOUSTICAL CEILING & UPPER WALL PLASTER	6	1-5 %	UNDETERMINED	ALL ROOMS	(1) (4) ROUGH TEXTURE PLASTER.	N
M	12" VFT	93	ASSUMED	UNDETERMINED	CLASSROOM 208 & 109	(1) (4)	N
M	9" VFT	95	ASSUMED	160 S	OFFICE & CLASSROOM 108	(1) (4) (7) CLASSROOM 109 & 209 HAVE BARE CONCRETE FLOORING.	N N/A
M	TRANSITE PANEL	98	ASSUMED	UNDETERMINED	METAL SHOP (ROOM 109 & 209)	(1) (4)	N
M	2' X 4' FCP'S	102	ASSUMED	UNDETERMINED	CLASSROOM 108	(1) (4)	N
M	12" VFT	104	ASSUMED	UNDETERMINED	CLASSROOM 109	(1) (4) (7) CLASSROOM 109 HAS BARE CONCRETE FLOORING.	N N/A
M	12" ACT	105	ASSUMED	UNDETERMINED	CLASSROOM 209 & 109	(12) CANNOT LOCATE  (2) ROOM 109, OVER SINK WATER DAMAGE	N

**CONDITION CODE**

**General Condition:** (1) Good (2) Damaged (3) Significantly Damaged (25% or more)  
**Change in Condition:** (4) No (5) Yes (If Yes, explain under comments)  
**Abated:** (6) Repaired (7) Removed (8) Encapsulated (9) Enclosed (10) Isolated & Restricted  
**Miscellaneous:** (11) Inaccessible, no inspection data (12) Other (Explain under comments) (13) Non-Asbestos/Not Inspected  
 (14) Non AHERA/Not Inspected

**CONSULT ORIGINAL AND SUPPLEMENTARY INSPECTION REPORTS FOR MATERIALS WITH TRACE AMOUNTS OF ASBESTOS**

**SIX MONTH SURVEILLANCE  
HOMOGENEOUS ACBM RECORDS**

Date of Inspection: 12/15/2005

District: Chico Unified School District

Inspector: Leroy Christophersen

School: Bidwell Junior High School

Unit: I (FKA 700)

Material Class	Material	Homo. Mat. #	% Asb.	Ft <sup>2</sup> /L.F.	Location	Condition: Code & Comments	Friable Yes/No
M	MUDDED JOINTS	1	1-5%	UNDETERMINED	CLASSROOMS 408 & 409	(11) ABATEMENT IN PROCESS 06/2005	N/A
M	ACOUSTICAL CEILING & UPPER WALL PLASTER	6	1-5%	UNDETERMINED	ALL CLASSROOMS <b>NOT IN THIS WING</b>	(1) (4) ROUGH TEXTURE PLASTER. (12) NO ACOUSTICAL CEILING TILES IN THE ENTIRE WING	N
M	2' X 4' FCP'S	106	NONE DETECTED	UNDETERMINED	CLASSROOMS 308, 309, 408, 408A, AND 409	(13) REPRESENTED BY SAMPLES HMS-R1304-40A & B COLLECTED ON 4-5-04. (1) (5) WATER DAMAGE. - REPAIRED 2004 UNIT I	N/A
M	GYPSUM BOARD & JOINT COMPOUND	154	NON ASBESTOS	300 S	THROUGHOUT	(5) (6) <del>DAMAGED IN WASH ROOM</del> (13) LETTER ON FILE	N
M	9" VFT	300	ASSUMED	UNDETERMINED	ALL CLASSROOMS	(7) REMOVED JUNE 2005	N
S	WALL PLASTER	500	NONE DETECTED	350 S	GIRL'S RESTROOM	(13) REPRESENTED BY SAMPLE HMS-R1304-02 COLLECTED ON 3-30-04.	N/A

**CONDITION CODE**

**General Condition:** (1) Good (2) Damaged (3) Significantly Damaged (25% or more)

**Change in Condition:** (4) No (5) Yes (If Yes, explain under comments)

**Abated:** (6) Repaired (7) Removed (8) Encapsulated (9) Enclosed (10) Isolated & Restricted

**Miscellaneous:** (11) Inaccessible, No inspection data (12) Other (Explain under comments) (13) Non-Asbestos/Not Inspected

**CONSULT ORIGINAL AND SUPPLEMENTARY INSPECTION REPORTS FOR MATERIALS WITH TRACE AMOUNTS OF ASBESTOS**

**SIX MONTH SURVEILLANCE  
HOMOGENEOUS ACBM RECORDS**

Date of Inspection: 12/15/2005

District: Chico Unified School District

Inspector: Leroy Christophersen

School: Bidwell Junior High School

Building: C & D

Material Class	Material	Homo. Mat. #	% Asb.	Ft <sup>2</sup> /L.F.	Location	Condition: Code & Comments	Friable Yes/No
M	ACOUSTICAL CEILING & UPPER WALL PLASTER	5	1-5 %	UNDETERMINED	ALL ROOMS, CLOSET (C), CLASSROOM 204, HALLWAY, CLASSROOM 250, AND GIRLS RESTROOM	(12) CANNOT LOCATE ACOUSTICAL TILES	N
M	ACOUSTICAL CEILING & UPPER WALL PLASTER	6	1-5%	UNDETERMINED	HALLWAY 300	(1) (4) ROUGH TEXTURE PLASTER. (12) ACOUSTICAL TILES NOT FOUND	N
M	DRYWALL	90	NONE DETECTED	UNDETERMINED	CLASSROOMS 250 & 307 AND RESTROOM	(13) REPRESENTED BY SAMPLE HMS-R1304-03 COLLECTED ON 3-30-04.	N/A
M	9" VFT	95	ASSUMED	UNDETERMINED	ALL ROOMS, HALLWAY 200, CLASSROOM 250, AND GIRLS RESTROOM	(7) MODERNIZATION 2004 REPLACED W/12" VFT BRN	N
M	12" VFT	104	ASSUMED	UNDETERMINED	CLASSROOMS 105-107	(7) MODERNIZATION 2004 REPLACED W/12" VFT BLUE & WHITE	N/A
M	12" ACT	105	ASSUMED	4,500 S	CLASSROOMS 105-107, 206, AND 207	(7) REPLACED WITH NEW CEILING TILES 2005	N
M	TRANSITE PIPE	107	ASSUMED	UNDETERMINED	CLOSET OF CLASSROOM 405	(1) (4)	N
M	12" ACT MASTIC	151	ASSUMED	<10 S	CLASSROOM 306	(1) (4)	N
M	9" VFT	300	ASSUMED	UNDETERMINED	HALLWAY 300	(7) REPLACED WITH 12" VFT BLUE & WHITE	N

**CONDITION CODE**

**General Condition:** (1) Good (2) Damaged (3) Significantly Damaged (25% or more)  
**Change in Condition:** (4) No (5) Yes (If Yes, explain under comments)  
**Abated:** (6) Repaired (7) Removed (8) Encapsulated (9) Enclosed (10) Isolated & Restricted  
**Miscellaneous:** (11) Inaccessible, No inspection data (12) Other (Explain under comments) (13) Non-Asbestos/Not Inspected

**CONSULT ORIGINAL AND SUPPLEMENTARY INSPECTION REPORTS FOR MATERIALS WITH TRACE AMOUNTS OF ASBESTOS**

**SIX MONTH SURVEILLANCE  
HOMOGENEOUS ACBM RECORDS**

Date of Inspection: 12/15/2005

District: Chico Unified School District

Inspector: Leroy Christophersen

School: Bidwell Junior High School

Building: B (FKA 800)

Material Class	Material	Homo. Mat. #	% Asb.	Ft <sup>2</sup> /L.F.	Location	Condition: Code & Comments	Friable Yes /No
M	9" VFT	95	ASSUMED	UNDETERMINED	LIBRARY	(1) (4)	N
M	12" ACT	109	ASSUMED	UNDETERMINED	LIBRARY, OFFICES, AND AUDIO VISUAL	(1) (4)	N
M	PLASTER	110	ASSUMED	UNDETERMINED	THROUGHOUT THE UNIT	(1) (4) SMOOTH WALL PLASTER.	N
M	BUR UNDER GRAVEL	501	NONE DETECTED	4,000 S	LIBRARY	(13) REPRESENTED BY SAMPLES HMS-R1304-36A & B COLLECTED ON 4-5-04.	N/A

**CONDITION CODE**

General Condition: (1) Good (2) Damaged (3) Significantly Damaged (25% or more)

Change in Condition: (4) No (5) Yes (If Yes, explain under comments)

Abated: (6) Repaired (7) Removed (8) Encapsulated (9) Enclosed (10) Isolated & Restricted

Miscellaneous: (11) Inaccessible, No inspection data (12) Other (Explain under comments) (13) Non-Asbestos/Not Inspected

**CONSULT ORIGINAL AND SUPPLEMENTARY INSPECTION REPORTS FOR MATERIALS WITH TRACE AMOUNTS OF ASBESTOS**

**SIX MONTH SURVEILLANCE  
HOMOGENEOUS ACBM RECORDS**

Date of Inspection: 12/15/2005

District: Chico Unified School District

Inspector: Leroy Christophersen

School: Bidwell Junior High School

Unit: A

Material Class	Material	Homo. Mat. #	% Asb.	Ft <sup>2</sup> /L.F.	Location	Condition: Code & Comments	Friable Yes/No
T	PIPEWRAP STRAIGHT	8	30-35%	UNDETERMINED	CHAIR STORAGE ROOM	(7) REMOVED MARCH 2005	N
M	FAN VENT INSULATION	94	ASSUMED	UNDETERMINED	FAN ROOMS	(12) COULD NOT FIND THIS ROOM .	N
M	TRANSITE PIPE	99	ASSUMED	UNDETERMINED	KITCHEN AND BOILER ROOM	(1) (4)	N
M	DRYWALL	103	ASSUMED	UNDETERMINED	KITCHEN	(1) (4)	N
M	9" VFT	104	ASSUMED	UNDETERMINED	MULTI-USE & KITCHEN	(2) (4) KITCHEN NEAR SINK & NURSES OFFICE TILE BEHIND DOOR LOOSE	N
T	BOILER	152	ASSUMED	1 UNIT	BOILER ROOM	(1) (4)	N
T	6" OD PIPE WRAP	153	ASSUMED	50 L	BOILER ROOM	(1) (4)	N
M	BUR UNDER GRAVEL	501	NONE DETECTED	3,000 S	EAST OVERHANG OF MULTI-USE	(13) REPRESENTED BY SAMPLES HMS-R1304-35A-C COLLECTED ON 4-5-04.	N/A
M	GRAY ROOF MASTIC	502	5-10% CHRYSOTILE	250 S	EAST OVERHANG OF MULTI-USE	(1) (4) REPRESENTED BY SAMPLES 32A & B COLLECTED ON 4-5-04.	N
S	WALL PLASTER	503	NONE DETECTED	UNDETERMINED	THROUGHOUT	(13) REPRESENTED BY SAMPLES CUSD BDS1-5 ON 05/17/2005	N/A

**CONDITION CODE**

General Condition: (1) Good (2) Damaged (3) Significantly Damaged (25% or more)

Change in Condition: (4) No (5) Yes (If Yes, explain under comments)

Abated: (6) Repaired (7) Removed (8) Encapsulated (9) Enclosed (10) Isolated & Restricted

Miscellaneous: (11) Inaccessible, No inspection data (12) Other (Explain under comments) (13) Non-Asbestos/Not Inspected

**CONSULT ORIGINAL AND SUPPLEMENTARY INSPECTION REPORTS FOR MATERIALS WITH TRACE AMOUNTS OF ASBESTOS**

**SIX MONTH SURVEILLANCE  
HOMOGENEOUS ACBM RECORDS**

Date of Inspection: 12/15/2005

District: Chico Unified School District

Inspector: Leroy Christophersen

School: Bidwell Junior High School

Building: J (FKA 500)

Material Class	Material	Homo. Mat. #	% Asb.	Ft <sup>2</sup> /L.F.	Location	Condition: Code & Comments	Friable Yes/No
M	9" VFT	95	ASSUMED	UNDETERMINED	ALL ROOMS	(7) MODERNIATION 2004	N
M	DRYWALL	100	1%	UNDETERMINED	ALL ROOMS	(7) MODERNIATION 2004	N
M	12" ACT	108	NON ASBESTOS	UNDETERMINED	CLASSROOMS 501& 502, OFFICE, AND PRACTICE ROOMS	(12) HMS REPORTED NON ASBESTOS & DID NOT NEED TO BE REMOVED	N
T	DUCT INSULATION	109	90-95%	UNDETERMINED	DUCT WORK-CEILING AND WALLS	(7)	N
M	BUR UNDER GRAVEL	501	NONE DETECTED	200 S	NORTH END, SOUTH END, AND MIDDLE	(13) REPRESENTED BY SAMPLES 34A-C COLLECTED ON 4-5-04.	
M	GRAY ROOF MASTIC	502	5-10% CHRYSOTILE	3,200 S	EXHAUST FAN ROOF JACK	(7) MODERNIATION PROJECT 2004	N
	12" VFT		NON ASBESTOS		ALL ROOMS – BLUE & WHITE COLOR	(13)	

**CONDITION CODE**

General Condition: (1) Good (2) Damaged (3) Significantly Damaged (25% or more)

Change in Condition: (4) No (5) Yes (If Yes, explain under comments)

Abated: (6) Repaired (7) Removed (8) Encapsulated (9) Enclosed (10) Isolated & Restricted

Miscellaneous: (11) Inaccessible, No inspection data (12) Other (Explain under comments) (13) Non-Asbestos/Not Inspected

**CONSULT ORIGINAL AND SUPPLEMENTARY INSPECTION REPORTS FOR MATERIALS WITH TRACE AMOUNTS OF ASBESTOS**

**SIX MONTH SURVEILLANCE  
HOMOGENEOUS ACBM RECORDS**

Date of Inspection: 12/15/2005

District: Chico Unified School District

Inspector: Leroy Christophersen

School: Bidwell Junior High School

Building: K (FKA 400)

Material Class	Material	Homo. Mat. #	% Asb.	Ft <sup>2</sup> /L.F.	Location	Condition: Code & Comments	Friable Yes/No
T	PIPE INSULATION & MUDDER FITTINGS	14	NONE DETECTED	UNDETERMINED	PE BOILER ROOM & TUNNEL	(7) MODERNIATION PROJECT 2004	N/A
T	TANK WRAP	15	NONE DETECTED	UNDETERMINED	PE BOILER ROOM	(13) REPRESENTED BY SAMPLES HMS-R1304-39A-G COLLECTED ON 4-13-04	N/A
M	TRANSITE PANELS	98	ASSUMED	UNDETERMINED	PANELS IS BOTH LOCKER ROOMS	(7)	N
M	BUR UNDER GRAVEL	501	NONE DETECTED	250 S	BOY'S AND GIRL'S LOCKER ROOM	(13) REPRESENTED BY SAMPLES HMS-R1304-31A-C AND 33A-C COLLECTED ON 4-5-04.	N/A
S	WALL PLASTER	504	NONE DETECTED	5,000 S	COACHES ROOM 112	(13) REPRESENTED BY SAMPLE HMS-R1304-01 COLLECTED ON 3-30-04.	N/A
T	BOILER INSULATION	505	ASSUMED	20 S	BOILER ROOM	(7) MODERNIATION PROJECT 2004	Y

**CONDITION CODE**

General Condition: (1) Good (2) Damaged (3) Significantly Damaged (25% or more)

Change in Condition: (4) No (5) Yes (If Yes, explain under comments)

Abated: (6) Repaired (7) Removed (8) Encapsulated (9) Enclosed (10) Isolated & Restricted

Miscellaneous: (11) Inaccessible, No inspection data (12) Other (Explain under comments) (13) Non-Asbestos/Not Inspected

**CONSULT ORIGINAL AND SUPPLEMENTARY INSPECTION REPORTS FOR MATERIALS WITH TRACE AMOUNTS OF ASBESTOS**



**SIX MONTH FILLANCE  
HOMOGENEOUS ASBM RECORDS**

Date of Inspection: 12/15/2005

District: Chico Unified School District

Inspector: Leroy Christophersen

School: Bidwell Junior High School

Building: F (FKA 600)

Material Class	Material	Hom. Mat. #	% Asb.	Fr <sup>2</sup> /L.F.	Location	Condition: Code & Comments	Friable Yes/No
T	MUDDIED JOINTS	1	1-5%	UNDETERMINED	CLASSROOM 109 NEAR THE SINK	(1) (4)	N
S	ACOUSTICAL CEILING & UPPER WALL PLASTER	6	1-5 %	UNDETERMINED	ALL ROOMS	(1) (4) ROUGH TEXTURE PLASTER.	N
M	12" VFT	93	ASSUMED	UNDETERMINED	CLASSROOM 208 & 109	(1) (4)	N
M	9" VFT	95	ASSUMED	160 S	OFFICE & CLASSROOM 108	(1) (4) (7) CLASSROOM 109 & 209 HAVE BARE CONCRETE FLOORING.	N N/A
M	TRANSITE PANEL	98	ASSUMED	UNDETERMINED	METAL SHOP (ROOM 109 & 209)	(1) (4)	N
M	2' X 4' FCP'S	102	ASSUMED	UNDETERMINED	CLASSROOM 108	(1) (4)	N
M	12" VFT	104	ASSUMED	UNDETERMINED	CLASSROOM 109	(1) (4) (7) CLASSROOM 109 HAS BARE CONCRETE FLOORING.	N N/A
M	12" ACT	105	ASSUMED	UNDETERMINED	CLASSROOM 209 & 109	(12) CANNOT LOCATE ROOM 109, OVER SINK WATER DAMAGE	N

**CONDITION CODE**

- General Condition: (1) Good (2) Damaged (3) Significantly Damaged (25% or more)  
 Change in Condition: (4) No (5) Yes (If Yes, explain under comments)  
 Abated: (6) Repaired (7) Removed (8) Encapsulated (9) Enclosed (10) Isolated & Restricted  
 Miscellaneous: (11) Inaccessible, no inspection data (12) Other (Explain under comments) (13) Non-Asbestos/Not Inspected  
 (14) Non AHERA/Not Inspected

**CONSULT ORIGINAL AND SUPPLEMENTARY INSPECTION REPORTS FOR MATERIALS WITH TRACE AMOUNTS OF ASBESTOS**

**SIX MONTH SURVEILLANCE  
HOMOGENEOUS ACBM RECORDS**

Date of Inspection: 12/15/2005

District: Chico Unified School District

Inspector: Leroy Christophersen

School: Bidwell Junior High School

Unit: I (FKA 700)

Material Class	Material	Homo. Mat. #	% Asb.	Ft <sup>2</sup> /L.F.	Location	Condition: Code & Comments	Friable Yes/No
M	MUDDIED JOINTS	1	1-5%	UNDETERMINED	CLASSROOMS 408 & 409	(11) ABATEMENT IN PROCESS 06/2005	N/A
M	ACOUSTICAL CEILING & UPPER WALL PLASTER	6	1-5%	UNDETERMINED	ALL CLASSROOMS NOT IN THIS WING	(1) (4) ROUGH TEXTURE PLASTER. (12) NO ACOUSTICAL CEILING TILES IN THE ENTIRE WING	N
M	2' X 4' FCP'S	106	NONE DETECTED	UNDETERMINED	CLASSROOMS 308, 309, 408, 408A, AND 409	(13) REPRESENTED BY SAMPLES HMS-R1304-40A & B COLLECTED ON 4-5-04. (1) (5) WATER DAMAGE. - REPAIRED 2004 UNIT I	N/A
M	GYPSUM BOARD & JOINT COMPOUND	154	NON ASBESTOS	300 S	THROUGHOUT	(5) (6) DAMAGED IN WASH-ROOM (13) LETTER ON FILE	N
M	9" VFT	300	ASSUMED	UNDETERMINED	ALL CLASSROOMS	(7) REMOVED JUNE 2005	N
S	WALL PLASTER	500	NONE DETECTED	350 S	GIRL'S RESTROOM	(13) REPRESENTED BY SAMPLE HMS-R1304-02 COLLECTED ON 3-30-04.	N/A

**CONDITION CODE**

General Condition: (1) Good (2) Damaged (3) Significantly Damaged (25% or more)  
 Change in Condition: (4) No (5) Yes (If Yes, explain under comments)  
 Abated: (6) Repaired (7) Removed (8) Encapsulated (9) Enclosed (10) Isolated & Restricted  
 Miscellaneous: (11) Inaccessible, No inspection data (12) Other (Explain under comments) (13) Non-Asbestos/Not Inspected

**CONSULT ORIGINAL AND SUPPLEMENTARY INSPECTION REPORTS FOR MATERIALS WITH TRACE AMOUNTS OF ASBESTOS**

**SIX MONTH FILLANCE  
HOMOGENEOUS AUBM RECORDS**

Date of Inspection: 12/15/2005

District: Chico Unified School District

Inspector: Leroy Christophersen

School: Bidwell Junior High School

Building: C & D

Material Class	Material	Hom. Mat. #	% Asp.	F <sup>2</sup> /L.F.	Location	Condition: Code & Comments	Friable Yes/No
M	ACOUSTICAL CEILING & UPPER WALL PLASTER	5	1-5%	UNDETERMINED	ALL ROOMS, CLOSET (C), CLASSROOM 204, HALLWAY, CLASSROOM 250, AND GIRLS RESTROOM	(12) CANNOT LOCATE ACOUSTICAL TILES	N
M	ACOUSTICAL CEILING & UPPER WALL PLASTER	6	1-5%	UNDETERMINED	HALLWAY 300	(1) (4) ROUGH TEXTURE PLASTER. (12) ACOUSTICAL TILES NOT FOUND	N
M	DRYWALL	90	NONE DETECTED	UNDETERMINED	CLASSROOMS 250 & 307 AND RESTROOM	(13) REPRESENTED BY SAMPLE HMS-R1304-03 COLLECTED ON 3-30-04.	N/A
M	9" VFT	95	ASSUMED	UNDETERMINED	ALL ROOMS, HALLWAY 200, CLASSROOM 250, AND GIRLS RESTROOM	(7) MODERNIZATION 2004 REPLACED W/1/2" VFT BRN	N
M	12" VFT	104	ASSUMED	UNDETERMINED	CLASSROOMS 105-107	(7) MODERNIZATION 2004 REPLACED W/1/2" VFT BLUE & WHITE	N/A
M	12" ACT	105	ASSUMED	4,500 S	CLASSROOMS 105-107, 206, AND 207	(7) REPLACED WITH NEW CEILING TILES 2005	N
M	TRANSITE PIPE	107	ASSUMED	UNDETERMINED	CLOSET OF CLASSROOM 405	(1) (4)	N
M	12" ACT MASTIC	151	ASSUMED	<10 S	CLASSROOM 306	(1) (4)	N
M	9" VFT	300	ASSUMED	UNDETERMINED	HALLWAY 300	(7) REPLACED WITH 12" VFT BLUE & WHITE	N

**CONDITION CODE**

- General Condition: (1) Good (2) Damaged (3) Significantly Damaged (25% or more)  
 Change in Condition: (4) No (5) Yes (If Yes, explain under comments)  
 Abated: (6) Repaired (7) Removed (8) Encapsulated (9) Enclosed (10) Isolated & Restricted  
 Miscellaneous: (11) Inaccessible, No Inspection data (12) Other (Explain under comments) (13) Non-Asbestos/Not Inspected

**CONSULT ORIGINAL AND SUPPLEMENTARY INSPECTION REPORTS FOR MATERIALS WITH TRACE AMOUNTS OF ASBESTOS**

**SIX MONTH SURVEILLANCE  
HOMOGENEOUS ACBM RECORDS**

Date of Inspection: 12/15/2005

Inspector: Leroy Christophersen

District: Chico Unified School District

School: Bidwell Junior High School

Building: B (FKA 800)

Material Class	Material	Homo. Mat. #	% Asb.	Ft <sup>2</sup> /L.F.	Location	Condition: Code & Comments	Friable Yes /No
M	9" VFT	95	ASSUMED	UNDETERMINED	LIBRARY	(1) (4)	N
M	12" ACT	109	ASSUMED	UNDETERMINED	LIBRARY, OFFICES, AND AUDIO VISUAL	(1) (4)	N
M	PLASTER	110	ASSUMED	UNDETERMINED	THROUGHOUT THE UNIT	(1) (4) SMOOTH WALL PLASTER.	N
M	BUR UNDER GRAVEL	501	NONE DETECTED	4,000 S	LIBRARY	(13) REPRESENTED BY SAMPLES HMS-R1304-36A & B COLLECTED ON 4-5-04.	N/A

**CONDITION CODE**

General Condition: (1) Good (2) Damaged (3) Significantly Damaged (25% or more)  
 Change in Condition: (4) No (5) Yes (If Yes, explain under comments)  
 Abated: (6) Repaired (7) Removed (8) Encapsulated (9) Enclosed (10) Isolated & Restricted  
 Miscellaneous: (11) Inaccessible, No inspection data (12) Other (Explain under comments) (13) Non-Asbestos/Not Inspected

**CONSULT ORIGINAL AND SUPPLEMENTARY INSPECTION REPORTS FOR MATERIALS WITH TRACE AMOUNTS OF ASBESTOS**

**SIX MONTH EILLANCE  
HOMOGENEOUS ACBM RECORDS**

Date of Inspection: 12/15/2005

District: Chico Unified School District

Inspector: Leroy Christophersen

School: Bidwell Junior High School

Unit: A

Material Class	Material	Homo. Mat. #	% Asb.	Ft <sup>2</sup> /L.F.	Location	Condition: Code & Comments	Frable Yes/No
T	PIPEWRAP STRAIGHT	8	30-35%	UNDETERMINED	CHAIR STORAGE ROOM	(7) REMOVED MARCH 2005	N
M	FAN VENT INSULATION	94	ASSUMED	UNDETERMINED	FAN ROOMS	(12) COULD NOT FIND THIS ROOM.	N
M	TRANSITE PIPE	99	ASSUMED	UNDETERMINED	KITCHEN AND BOILER ROOM	(11) (4)	N
M	DRYWALL	103	ASSUMED	UNDETERMINED	KITCHEN	(11) (4)	N
M	9" VFT	104	ASSUMED	UNDETERMINED	MULTI-USE & KITCHEN	(2) (4) KITCHEN NEAR SINK & NURSES OFFICE TILE BEHIND DOOR LOOSE	N
T	BOILER	152	ASSUMED	1 UNIT	BOILER ROOM	(1) (4)	N
T	6" OD PIPE WRAP	153	ASSUMED	50 L	BOILER ROOM	(1) (4)	N
M	BUR UNDER GRAVEL	501	NONE DETECTED	3,000 S	EAST OVERHANG OF MULTI-USE	(13) REPRESENTED BY SAMPLES HMS-R1304-35A-C COLLECTED ON 4-5-04.	N/A
M	GRAY ROOF MASTIC	502	5-10% CHRYSOTILE	250 S	EAST OVERHANG OF MULTI-USE	(11) (4) REPRESENTED BY SAMPLES 32A & B COLLECTED ON 4-5-04.	N
S	WALL PLASTER	503	NONE DETECTED	UNDETERMINED	THROUGHOUT	(13) REPRESENTED BY SAMPLES CUSD BDS1-5 ON 05/17/2005	N/A

**CONDITION CODE**

- General Condition: (1) Good (2) Damaged (3) Significantly Damaged (25% or more)  
 Change in Condition: (4) No (5) Yes (If Yes, explain under comments)  
 Abated: (6) Repaired (7) Removed (8) Encapsulated (9) Enclosed (10) Isolated & Restricted  
 Miscellaneous: (11) Inaccessible, No Inspection data (12) Other (Explain under comments) (13) Non-Asbestos/Not Inspected

**CONSULT ORIGINAL AND SUPPLEMENTARY INSPECTION REPORTS FOR MATERIALS WITH TRACE AMOUNTS OF ASBESTOS**

**SIX MONTH SURVEILLANCE  
HOMOGENEOUS ACBM RECORDS**

Date of Inspection: 12/15/2005

District: Chico Unified School District

Inspector: Leroy Christophersen

School: Bidwell Junior High School

Building: J (FKA 500)

Material Class	Material	Homo. Mat. #	% Asb.	Ft <sup>2</sup> /L.F.	Location	Condition: Code & Comments	Friable Yes/No
M	9" VFT	95	ASSUMED	UNDETERMINED	ALL ROOMS	(7) MODERNIATION 2004	N
M	DRYWALL	100	1%	UNDETERMINED	ALL ROOMS	(7) MODERNIATION 2004	N
M	12" ACT	108	NON ASBESTOS	UNDETERMINED	CLASSROOMS 501 & 502, OFFICE, AND PRACTICE ROOMS	(12) HMS REPORTED NON ASBESTOS & DID NOT NEED TO BE REMOVED	N
T	DUCT INSULATION	109	90-95%	UNDETERMINED	DUCT WORK-CEILING AND WALLS	(7)	N
M	BUR UNDER GRAVEL	501	NONE DETECTED	200 S	NORTH END, SOUTH END, AND MIDDLE	(13) REPRESENTED BY SAMPLES 34A-C COLLECTED ON 4-5-04.	
M	GRAY ROOF MASTIC	502	5-10% CHRYSOTILE	3,200 S	EXHAUST FAN ROOF JACK	(7) MODERNIATION PROJECT 2004	N
	12" VFT		NON ASBESTOS		ALL ROOMS - BLUE & WHITE COLOR	(13)	

**CONDITION CODE**

General Condition: (1) Good (2) Damaged (3) Significantly Damaged (25% or more)  
 Change in Condition: (4) No (5) Yes (If Yes, explain under comments)  
 Abated: (6) Repaired (7) Removed (8) Encapsulated (9) Enclosed (10) Isolated & Restricted  
 Miscellaneous: (11) Inaccessible, No inspection data (12) Other (Explain under comments) (13) Non-Asbestos/Not Inspected

**CONSULT ORIGINAL AND SUPPLEMENTARY INSPECTION REPORTS FOR MATERIALS WITH TRACE AMOUNTS OF ASBESTOS**

**SIX MONTH SURVEILLANCE  
HOMOGENEOUS ACBM RECORDS**

Date of Inspection: 12/15/2005

District: Chico Unified School District

Inspector: Leroy Christophersen

School: Bidwell Junior High School

Building: K (FKA 400)

Material Class	Material	Hom. Mat. #	% Asb.	Ft <sup>2</sup> /L.F.	Location	Condition: Code & Comments	Friable Yes/No
T	PIPE INSULATION & MUDDIED FITTINGS	14	NONE DETECTED	UNDETERMINED	PE BOILER ROOM & TUNNEL	(7) MODERNIZATION PROJECT 2004	N/A
T	TANK WRAP	15	NONE DETECTED	UNDETERMINED	PE BOILER ROOM	(13) REPRESENTED BY SAMPLES HMS-R1304-39A-G COLLECTED ON 4-13-04	N/A
M	TRANSITE PANELS	98	ASSUMED	UNDETERMINED	PANELS IS BOTH LOCKER ROOMS	(7)	N
M	BUR UNDER GRAVEL	501	NONE DETECTED	250 S	BOY'S AND GIRL'S LOCKER ROOM	(13) REPRESENTED BY SAMPLES HMS-R1304-31A-C AND 33A-C COLLECTED ON 4-5-04.	N/A
S	WALL PLASTER	504	NONE DETECTED	5,000 S	COACHES ROOM 112	(13) REPRESENTED BY SAMPLE HMS-R1304-01 COLLECTED ON 3-30-04.	N/A
T	BOILER INSULATION	505	ASSUMED	20 S	BOILER ROOM	(7) MODERNIZATION PROJECT 2004	Y

**CONDITION CODE**

- General Condition: (1) Good (2) Damaged (3) Significantly Damaged (25% or more)  
 Change in Condition: (4) No (5) Yes (If Yes, explain under comments)  
 Abated: (6) Repaired (7) Removed (8) Encapsulated (9) Enclosed (10) Isolated & Restricted  
 Miscellaneous: (11) Inaccessible, No inspection data (12) Other (Explain under comments) (13) Non-Asbestos/Not Inspected

**CONSULT ORIGINAL AND SUPPLEMENTARY INSPECTION REPORTS FOR MATERIALS WITH TRACE AMOUNTS OF ASBESTOS**

**SIX MONTH SURVEILLANCE  
HOMOGENEOUS ACBM RECORDS**

Date of Inspection: 12/15/2005

Inspector: Leroy Christophersen

Building: L (FKA 900)

District: Chico Unified School District

School: Bidwell Junior High School

Material Class	Material	Homo. Mat. #	% Asb.	F <sup>2</sup> /L.F.	Location	Condition: Code & Comments	Friable Yes/No
T	PIPE WRAP STRAIGHT	17	15-20%	UNDETERMINED	GYM & STOREROOM	(1) (4)	N
T	PIPE WRAP CORNER	18	5-10%	UNDETERMINED	GYM, BOILER ROOM, AND STOREROOM	(1) (4)	N
M	12" ACT	111	ASSUMED	UNDETERMINED	GYM	(5) (6) SOME TILES HAVE BEEN REMOVED. THE MASTIC IS SHOWING.  THE WALLS ARE CONCRETE & THE CEILING IS METAL.	N

**CONDITION CODE**

General Condition: (1) Good (2) Damaged (3) Significantly Damaged (25% or more)  
Change in Condition: (4) No (5) Yes (If Yes, explain under comments)  
Abated: (6) Repaired (7) Removed (8) Encapsulated (9) Enclosed (10) Isolated & Restricted  
Miscellaneous: (11) Inaccessible, No inspection data (12) Other (Explain under comments) (13) Non-Asbestos/Not Inspected

**CONSULT ORIGINAL AND SUPPLEMENTARY INSPECTION REPORTS FOR MATERIALS WITH TRACE AMOUNTS OF ASBESTOS**



*HMS, Inc.*  
HAZARD MANAGEMENT SERVICES, INC.

COPY

4200 Rocklin Rd., Ste. 7  
Rocklin, CA 95677-2860  
(916) 632-6800 • (916) 632-6841 Fax

---

September 14, 2005

Mr. Michael Weissenborn, Project Manager  
Facilities Department  
Chico Unified School District  
1163 East 4<sup>th</sup> Street  
Chico, CA 95928

Re: Bidwell Junior High School, Asbestos Abatement Work, Post Job Submittal from AFM Environmental, Inc. (AFM)

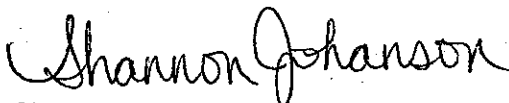
Dear Mr. Weissenborn:

AFM has submitted final documentation to Hazard Management Services (HMS, Inc.). This **COMPLETE's** the final close-out documentation requirements, and is **ACCEPTED** for this project.

I am retaining all documents submitted to me and returning to you only this confirmation letter. This and all other documentation pertaining to the project will be submitted to Chico Unified School District in whole at a later date.

Please call me if you have any questions at (916) 632-6800.

Sincerely,



Shannon Johanson  
Project Manager Administrative Assistant

C:\Shannon's Documents\CLIENTS\Chico USD\Bidwell JHS\R1304\AcceptLetter.wpd

SEP 16 2005

*HMS, Inc.*  
HAZARD MANAGEMENT SERVICES, INC.

4200 Rocklin Rd., Ste. 7  
Rocklin, CA 95677-2860  
(916) 632-6800 • (916) 632-6841 Fax

---

September 21, 2005

Mr. Michael Weissenborn  
Project Manager Facilities & Development  
Chico Unified School District  
1163 E. Seventh Street  
Chico, CA 95928

RE: Final Close-Out Documentation for Asbestos/Hazardous Materials Related Work at  
Bidwell Junior High School Located at 2376 North Avenue in Chico, CA 95926

Dear Mr. Weissenborn:

This letter reports the completion of work, which impacted lead and asbestos containing building materials at Bidwell Junior High School. With this report Hazard Management Services, Inc. (HMS, Inc.) has completed all of our responsibilities under the present contract. All work was completed in accordance with the abatement specifications included with this report.

Area air samples were collected by HMS, Inc. to monitor the work practices of the abatement contractor. The analytical results of these samples indicated the work practices utilized by the contractor were generally effective in controlling emissions during the removal work. All area samples were analyzed utilizing Phase Contrast Microscopy (PCM) in accordance with the NIOSH 7400 method.

Upon completion of removal by the abatement contractor of asbestos-containing materials and prior to conducting clearance air monitoring of each containment, HMS, Inc. conducted a thorough visual inspection. HMS, Inc. verified that the contractor had completed the removal of the designated materials, and had cleaned the containment area of existing dust, debris, materials, and waste. When HMS, Inc. accepted the containment the abatement contractor was instructed to encapsulate all surfaces within each containment.

Clearance air monitoring was conducted throughout campus where asbestos was removed in accordance with the US Environmental Protection Agency (US EPA) Asbestos Hazard Emergency Response Act (AHERA) criteria, and in accordance with 40 CFR Part 763, Appendix A. Analysis of clearance air samples collected was performed by Transmission Electron Microscopy (TEM) and Phase Contrast Microscopy by Asbestech of Carmichael, CA. Please refer to the project book for exact removal and clearance locations.

HMS, Inc. collected bulk samples of various materials suspected of containing asbestos during this project. These samples were analyzed for asbestos content using Polarized Light Microscopy (PLM) and dispersion staining by Asbestech.

HMS, Inc. also conducted an XRF survey of interior and exterior architectural coatings before commencement of the project to help determine lead levels and work practices to be applied during surface preparations by contractors. No bulk samples for lead analysis were collected for this project.

Mr. Michael Weissenborn  
Project Manager Facilities & Development  
Chico Unified School District  
September 21, 2005  
Page Two

A copy of all sample analysis reports and all laboratory certifications can be found in Section "V" of the close-out documents.

HMS, Inc. is including documentation provided by the contractor(s) with this report as part of the final close-out documentation, as required by the project specifications. These documents include copies of worker training certificates, medical exams, respirator fit tests, air sampling data, safety meetings, sign-in sheets, and other information that were submitted to HMS, Inc. HMS, Inc. cannot attest to the accuracy or validity of the documents provided by the contractor(s), since these were prepared by the contractor, not HMS, Inc. It is the responsibility of the contractor(s) to comply with the various regulations and provide valid, true, and accurate documents as they pertain to this project.

In order to meet the AHERA requirements, the enclosed documentation must be kept on file by the District as part of the District's US EPA AHERA Management Plan. The District must keep a copy of this report in the District Office and the appropriate school office. Be sure the District receives these documents so they can update the list of asbestos-containing building materials in the Management Plan. The District should also indicate on the "Homogeneous Material Records" (HMR) the abatement actions taken. The District should also be sure to note in the annual notifications to parents and employees that abatement work was completed at this site.

Please call me at (916) 632-6800 if you have any questions regarding this report.

Sincerely,



John A. Angi  
Project Manager  
Certified Asbestos Consultant  
DOSH #03-3330

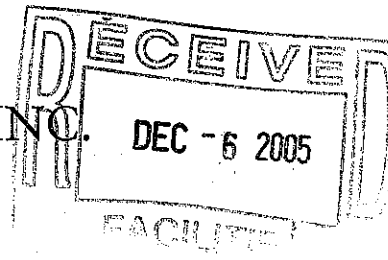
Enclosures

# TABLE OF CONTENTS

- I. SPECIFICATIONS
  - A. Addenda, Change Orders, Scope of Work, Bid Specifications, General Requirements, Maps, Advertisement, etc.
- II. CONTRACTOR DOCUMENTATION
  - A. Contractor License, DOSH Registration, Asbestos Certification
  - B. Contractor Insurance - General Liability, Workers' Compensation, Automobile Insurance
  - C. Contractor Bonding - Bid Bond, Performance Bond, Payment Bond
  - D. Contractor Contract Agreement or Purchase Order
  - E. Subcontractor Insurance - General Liability, Workers' Compensation, Automobile Insurance
  - F. Contractor Notifications - APCD or AQMB, EPA, OSHA, ARB
  - G. Project Schedule
- III. PRE-CONSTRUCTION MEETING DOCUMENTATION & EMERGENCY INFORMATION
  - A. Pre-Construction Meeting Documentation
  - B. Bidwalk Attendance
  - C. Results
  - D. Emergency Telephone Lists & Emergency Information
- IV. CONTRACTOR EMPLOYEE RECORDS
  - A. Roster of Asbestos Workers
  - B. AHERA Training Certificates
  - C. Medical Monitoring
  - D. Respirator Fit-Tests
- V. HMS, INC. DOCUMENTATION
  - A. Project Manager's Daily Log
  - B. Daily Laboratory Analysis Results
  - C. Daily Air Sample Submittals
  - D. Clearance Air Sample Results
  - E. Clearance Air Sample Submittals
  - F. Bulk Results
  - G. Bulk Submittals
  - H. Visual Inspection Report
  - I. Attic Space Report
  - J. Rotameter Calibration Data
  - K. Laboratory Accreditation Statements (NVLAP, PAT)
  - L. AHERA & OSHA Documentation
- VI. CONTRACTOR DATA
  - A. Personal Air Monitoring Submittal Data and Laboratory Results
  - B. Contractor Entry/Exit Logs
  - C. Daily Worker Roster
  - D. Safety Meeting Sign-in Lists & Other Logs
  - E. DOP Tests
  - F. Manometer Graphs and/or Readings
  - G. Manufacturers' Equipment Certifications and MSDS Sheets
  - H. Laboratory Accreditation Statements (NVLAP, PAT)
  - I. Miscellaneous
- VII. WASTE MANIFEST RECORDS
  - A. Waste Manifest
  - B. Notice and Certification
  - C. Waste Hauler Documentation
  - D. Dump Site Documentation
- VIII. SUMMARY DOCUMENTS
  - A. Reasons for Abatement Action (LEA's only)
  - B. Regulatory Agency Inspection Documents
  - C. Communications
  - D. Photographs
  - E. Proposal or Contracts

*HMS, Inc.*  
HAZARD MANAGEMENT SERVICES, INC.

4200 Rocklin Rd., Ste. 7  
Rocklin, CA 95677-2860  
(916) 632-6800 • (916) 632-6841 Fax



December 5, 2005

Mr. Michael Weissenborn, Project Manager  
Facilities Department  
Chico Unified School District  
1163 East 4th Street  
Chico, CA 95928

Re: Bidwell Jr. High School Buildings A and C; Report of Asbestos Inspection Report for Modernization Project

Dear Mr. Weissenborn:

This report presents results of asbestos inspection of Building A (Classrooms 108, 109, 208, 209, and other offices) and Building C (Classrooms 206 and 207) located at Bidwell Jr. High School by Hazard Management Services, Inc. (HMS, Inc.). The onsite work was completed between November 14 and 30, 2005, which included a review of the existing US EPA AHERA report, and a review of all building materials in the rooms that will be impacted by the planned renovation project. The inspection was very limited in scope and included only those areas within the two buildings indicated on the drawings that will be affected by the project. The inspection was conducted to comply with U.S. EPA NESHAP requirements for a pre-renovation asbestos survey.

**Inspection Protocols**

HMS, Inc. personnel utilized the following inspection protocols.

Asbestos

1. The interior and exterior of the two buildings were visually inspected for suspect asbestos containing building materials related to the project. Excluded from the survey were roofing samples, since you indicated the roofing systems from the two buildings had been replaced within the past 3-4 years and no major work is planned which would impact the roofing materials.
2. Representative bulk samples of each suspect material were collected using a hand tool to obtain bulk samples and then placed into sealed plastic bags. The sample locations are indicated on the sample submission chain-of-custody report, as well as, on the attached schematic.
3. HMS, Inc. did not sample specific non-suspect materials such as glass, foam, wood, metal, rubber, plastic, and concrete.

There were 26 bulk samples collected for asbestos evaluation on this investigation. The bulk samples were delivered to Asbestech laboratory of Carmichael, CA. Asbestech is approved to analyze asbestos under the National Voluntary Laboratory Accreditation Program (NVLAP). The samples were analyzed using the Polarized Light Microscopy (PLM) method. One of the drywall samples found to contain asbestos in the joint compound was subsequently analyzed by the 400 point array method for waste characterization.

Mr. Michael Weissenborn  
Chico Unified School District  
December 5, 2005  
Page Two

**Inspection Results**

Asbestos

26 bulk samples were collected of materials inside of the two buildings which are considered suspect to possibly contain asbestos by the U.S. EPA. Asbestos was detected in 14 of the 26 samples collected in these areas. The following is a summary of materials found to contain asbestos by bulk sampling or by assuming them to contain asbestos in each Building.

**Building A Classrooms 108, 109, 208, 209 and Small Offices**

<u>Materials Found or Assumed to Contain Asbestos</u>	<u>% Asbestos &amp; Type</u>	<u>NESHAP Classification</u>
Basecove Mastic	< 1-5% Chrysotile	Category I
9" Vinyl Floor Tiles (VFT)	1-5% Chrysotile	Category I
Black Mastic Associated with 9" VFT	1-5% Chrysotile	Category I
12" Vinyl Floor Tiles in Room 208	1-2% Chrysotile	Category I
Black Mastic Associated with 12" VFT	1-5% Chrysotile	Category I
Drywall and Joint Compound	1-2% Chrysotile	Not Classified
Drywall and Joint Compound (Point Count)	< 1% Chrysotile	Not Classified
Chalkboards (Green)	Assumed Positive	Category II
Fire Rated Doors	Assumed Positive	RACM

Materials Found Not to Contain Asbestos

2 x 4 Drop-in Acoustical Ceiling Panel  
12" Acoustical Ceiling Tile  
Exterior Stucco

**Building C Classrooms 206 and 207**

<u>Materials Found or Assume to Contain Asbestos</u>	<u>% Asbestos</u>	<u>NESHAP Classification</u>
Basecove Mastic	<1% Tremolite	Category I
Black Sinks Associated with All Science Tables	5-10% Chrysotile	Category II
9" Vinyl Floor Tiles (VFT)	2-7% Chrysotile	Category I
Black Mastic Associated with 9" VFT	1-5% Chrysotile	Category I
Drywall Joint Compound at Wall Addition in Room 207	1-2% Chrysotile	Not Classified
Chalkboards (Green)	Assumed Positive	Category II

Materials Found Not to Contain Asbestos

12" Acoustical Ceiling Tile  
Exterior Stucco  
Plaster Wall Material

Mr. Michael Weissenborn  
Chico Unified School District  
December 5, 2005  
Page Three

**Recommendations**

Asbestos

Asbestos was detected in many materials in the two buildings that will be involved in the renovation project. The results of these tests will be included in the asbestos specifications that I will be preparing for the project.

I reviewed the various classrooms and other spaces in the two buildings and find the drywall walls in Building A to be the most challenging for the asbestos abatement phase of the work. The drywall separating the classrooms (108, 109, 208, 209, and other offices) are partially or completely covered with wood paneling and the walls are relatively high. In addition, there are many items attached to the wood paneling or drywall walls that will require addressing by the specifications.

The key items attached to the wall systems include:

TV's, Speakers, Fire Alarms, Intrusion Alarms, Gas Line in Room 108, Clocks, Electrical Conduit, Supply Registers, Touch Pad Alarms, Main Electrical Service Panels, HVAC Ducts, Fire Extinguishers, Flag Mounts

Of particular note is in Classroom 208 at the south wall east of the entry door, there are main computer lines coming into the classroom at this location. According to the drawings, this area of the wall will be removed for a new door.

Be sure to include a copy of this report in the EPA AHERA report file for Bidwell Jr. High School. Our three year re-inspection reports will also make noted changes to the inspections files with bulk sample results reflected in the next inspection.

Disclaimers

The nature of the renovation or demolition work is such that materials can be uncovered which previously were unknown to exist. Therefore, HMS, Inc. cannot be responsible for "hidden materials". If suspect materials, other than those included in this investigation are discovered during the renovation/demolition, it must be assumed that the materials contain asbestos. The project should then be halted and re-evaluated.

Please call (916) 632-6800 if you have any questions.

Sincerely,



Richard Beall, CIH, CSP  
Cal/OSHA Asbestos Certification #92-0032

Enclosures

ASBESTECH  
6825 Fair Oaks Blvd., Suite 103  
Carmichael, California 95608  
Tel.(916) 481-8902 Fax (916) 481-3975

**Client:**

Hazard Management Services  
4200 Rocklin Rd., Suite 7  
Rocklin, CA 95677

**Job:**

R1823 Chico USD  
Bidwell JHS  
Chico, Ca

**BULK ASBESTOS ANALYSIS REPORT**

LAB JOB # 47496  
Date/Time Collected: 11/14/05  
Date Received: 11/15/05

NVLAP # 101442  
DOHS # 1153  
Date Analyzed: 11/18/05

<u>Sample No.</u>	<u>Color/Description</u>	<u>% Type Asbestos</u>	<u>Other Materials</u>
HMS-R1823-15A	White drywall/joint compound composite NE corner of wall in room 112 (finish room) in bldg. A	<1 CHRYSOTILE	Gypsum Calcite Cellulose

NOTE: This sample was analyzed by quantitative Point Counting using a Chalkley Point Array over 400 non-empty points.

THE ANALYSIS USES POLARIZED LIGHT MICROSCOPY AND DISPERSION STAINING FOLLOWING E.P.A. METHOD 600/R-93/116. NON-FRIABLE MATERIALS WERE ANALYZED APPLYING THE SAME METHOD. THE LOWER DETECTION LIMIT IS <1 % WITH THE PROVISIO THAT PLM MAY NOT DETECT FIBERS <0.25 MICRONS IN DIAMETER THAT MAY BE PRESENT IN SAMPLES SUCH AS FLOOR TILES. IN ACCORDANCE WITH TITLE 22, CCR, SECTION 66261.24(a)(2)(A), THE MCL IS 1 %. SAMPLES WERE NOT COLLECTED BY ASBESTECH. THIS REPORT MUST NOT BE REPRODUCED EXCEPT IN FULL WITHOUT THE APPROVAL OF ASBESTECH. THIS REPORT RELATES ONLY TO THE ITEMS TESTED. THIS REPORT MUST NOT BE USED TO CLAIM PRODUCT ENDORSEMENT BY N.V.L.A.P. OR ANY AGENCY OF THE U.S. GOVERNMENT. ASBESTECH ACCEPTS TECHNICAL RESPONSIBILITY FOR THIS REPORT AND DATE OF ISSUE.

**NVLAP**

ANALYST SIGNATURE: \_\_\_\_\_





ASBESTECH  
 6825 Fair Oaks Blvd., Suite 103  
 Carmichael, California 95608  
 Tel.(916) 481-8902 Fax (916) 481-3975

**Client:**

Hazard Management Services  
 4200 Rocklin Rd., Suite 7  
 Rocklin, CA 95677

**Job:**

R1823 Chico USD  
 Bidwell JHS  
 Chico, Ca

**BULK ASBESTOS ANALYSIS REPORT**

LAB JOB # 47485-4  
 Date/Time Collected: 11/14/05  
 Date Received: 11/15/05

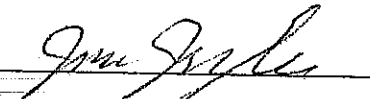
NVLAP # 101442  
 DOHS # 1153  
 Date Analyzed: 11/17/05

<i>Sample No.</i>	<i>Color/Description</i>	<i>% Type Asbestos</i>	<i>Other Materials</i>
HMS-R1823-14A	White drywall joint compound at metal corner of wall at mezzanine by ladder in classroom 108, bldg. A	1-2 CHRYSOTILE	Granular Mins.
15A	White drywall, NE corner of wall in room 112 (finish room) in bldg. A	NONE DETECTED	Gypsum Cellulose
	White joint compound	1-2 CHRYSOTILE	Granular Mins.
	Composite	<1 CHRYSOTILE	Gypsum Cellulose Granular Mins.
15B	White drywall, ceiling in room between classrooms 108 & 208 at area with missing 12" ACT, bldg. A	NONE DETECTED	Gypsum Cellulose
	White joint compound	1-2 CHRYSOTILE	Granular Mins.
	Composite	<1 CHRYSOTILE	Gypsum Cellulose Granular Mins.

THE ANALYSIS USES POLARIZED LIGHT MICROSCOPY AND DISPERSION STAINING FOLLOWING E.P.A. METHOD 600/R-93/116. NON-FRIABLE MATERIALS WERE ANALYZED APPLYING THE SAME METHOD. THE LOWER DETECTION LIMIT IS <1 % WITH THE PROVISIO THAT PLM MAY NOT DETECT FIBERS <0.25 MICRONS IN DIAMETER THAT MAY BE PRESENT IN SAMPLES SUCH AS FLOOR TILES. IN ACCORDANCE WITH TITLE 22, CCR, SECTION 66261.24(a)(2)(A), THE MCL IS 1%. SAMPLES WERE NOT COLLECTED BY ASBESTECH. THIS REPORT MUST NOT BE REPRODUCED EXCEPT IN FULL WITHOUT THE APPROVAL OF ASBESTECH. THIS REPORT RELATES ONLY TO THE ITEMS TESTED. THIS REPORT MUST NOT BE USED TO CLAIM PRODUCT ENDORSEMENT BY N.V.L.A.P. OR ANY AGENCY OF THE U.S. GOVERNMENT. ASBESTECH ACCEPTS TECHNICAL RESPONSIBILITY FOR THIS REPORT AND DATE OF ISSUE.

**NVLAP**

ANALYST SIGNATURE:



**BULK MATERIAL Analysis Report Form for Hazard Management Services, Inc.**

4200 Rocklin Road, Suite 7  
Rocklin, CA 95677  
(916) 632-6800  
FAX (916) 632-6841

**JOB I.D.:** R1823      **CLIENT:** Chico USD

**COLLECTED BY:** Rick Beall

**DATE COLLECTED:** 11/14/05

**DATE SUBMITTED:** 11/15/05

**LAB SUBMITTED TO:** Asbestech

**SPECIAL INSTRUCTIONS:**

**ANALYSIS REQUESTED:** Asbestos by PLM with Dispersion Staining

**TURNAROUND TIME:** Hours

**JOB SITE:** Bidwell Junior High School  
2376 North Avenue  
Chico, CA 95926

<b>SAMPLE #</b>	<b>RESULTS</b>	<b>MATERIAL DESCRIPTION/LOCATION</b>
HMS-R1823-01A	NONE DETECTED	2 X 4 Drop in Ceiling Tile - North Area of Classroom 108, Building A
HMS-R1823-02A	NONE DETECTED	12" Acoustical Ceiling Tile, Mezzanine Ceiling in Classroom 109, Building A
HMS-R1823-03A	1-5% CHRYSOTILE	Basecove Mastic - Light Brown Colored, Lower East Wall, Classroom 109, Building A
HMS-R1823-03B	<1% CHRYSOTILE	Basecove Mastic - Dark Brown Colored, West Wall Room 208, Building A
HMS-R1823-04A	NONE DETECTED	Exterior Stucco, East Wall of Building by Door to Classroom 109, Building A
HMS-R1823-04B	NONE DETECTED	Exterior Stucco, North Side of Building by Door to Classroom 109, Building A
HMS-R1823-04C	NONE DETECTED	Exterior Stucco, West Wall of Building by Door to Classroom 208, Building A
HMS-R1823-05A	5-10% CHRYSOTILE	Black Sink from Classroom 207, Building C
HMS-R1823-06A	1-2% CHRYSOTILE	White Joint Compound at Lower of Small Wall Column in Classroom 207, Building C at South East Area of Room
HMS-R1823-06B	NONE DETECTED	Tan Wall Plaster Where new Door is Located, South Wall of Classroom 207, Building C
HMS-R1823-06C	NONE DETECTED	Tan Wall Plaster, West Wall by Door in Storage Room Between Classrooms 206 & 207, Building C
HMS-R1823-06D	NONE DETECTED	Wall Plaster Lower East Wall in Classroom 206, Building C
HMS-R1823-07A	2-7% CHRYSOTILE (In VFT) 1-5% CHRYSOTILE (In Mastic)	9" VFT and Black Mastic East Side Under Table Extension, Classroom 207, Building C

**BULK MATERIAL Analysis Report Form for Hazard Management Services, Inc.**

4200 Rocklin Road, Suite 7  
Rocklin, CA 95677  
(916) 632-6800  
FAX (916) 632-6841

**JOB I.D.:** R1823      **CLIENT:** Chico USD      **COLLECTED BY:** Rick Beall  
**DATE COLLECTED:** 11/14/05      **DATE SUBMITTED:** 11/15/05      **LAB SUBMITTED TO:** Asbestech

**SPECIAL INSTRUCTIONS:**

**ANALYSIS REQUESTED:** Asbestos by PLM with Dispersion Staining      **TURNAROUND TIME:** Hours

**JOB SITE:** Bidwell Junior High School  
2376 North Avenue  
Chico, CA 95926

SAMPLE #	RESULTS	MATERIAL DESCRIPTION/LOCATION
HMS-R1823-15B	NONE DETECTED (In Drywall) 1-2% CHRYSOTILE (Joint Compound) <1% CHRYSOTILE (Composite)	Drywall and Joint Compound Ceiling in Room Between Classrooms 108 & 208 at Area with Missing 12" ACT, Building A
HMS-R1823-15C	NONE DETECTED (In Drywall) 1-2% CHRYSOTILE (Joint Compound) <1% CHRYSOTILE (Composite)	Drywall and Joint Compound North West Wall at Corner in Room 111 in Building A
HMS-R1823-15D	NONE DETECTED (In Drywall) 1-2% CHRYSOTILE (Joint Compound) <1% CHRYSOTILE (Composite)	Drywall and Joint Compound South West Wall in Room Between Classrooms 108 & 208, Building A
HMS-R1823-15E	NONE DETECTED (In Drywall) 1-2% CHRYSOTILE (Joint Compound) <1% CHRYSOTILE (Composite)	Drywall and Joint Compound South West Corner of Wall in Classroom 112, Building A

D:\Clients\ChicoUSD\R1823\BulkAnaRpt01A.wpd

# BULK MATERIAL Analysis Request Form for Hazard Management Services, Inc.

4200 Rocklin Road, Suite 7  
Rocklin, CA 95677  
(916) 632-6800  
(916) 632-6841 FAX

JOB I.D.: R1823      CLIENT: Chico USD

COLLECTED BY: Rick Beall

DATE COLLECTED: 11/14/05      DATE SUBMITTED: 11/15/05

LAB SUBMITTED TO: Asbestech

## SPECIAL INSTRUCTIONS:

ANALYSIS REQUESTED: Asbestos by PLM with Dispersion Staining      TURNAROUND TIME: 72 Hours

JOB SITE:      Bidwell Junior High School  
2376 North Avenue  
Chico, CA 95926

SAMPLE #	MATERIAL DESCRIPTION/LOCATION
HMS-R1823-11A	Brown Basecove Mastic, West Side at Extension Wooden Table Base, Classroom 207, Building C
HMS-R1823-12A	Exterior Stucco Below Register Grill at South Wall Classroom 207, Building C
HMS-R1823-12B	Exterior Stucco Below Register Grill at South Wall Classroom 206, Building C
HMS-R1823-13A	12" ACT, South Side of Classroom Near Door, Classroom 207, Building C
HMS-R1823-14A	Drywall Joint Compound at Metal Corner of Wall at Mezzanine by Ladder in Classroom 108, Building A
HMS-R1823-15A	Drywall and Joint Compound North East Corner of Wall in Room 112 (Finish Room) in Building A
HMS-R1823-15B	Drywall and Joint Compound Ceiling in Room Between Classrooms 108 & 208 at Area with Missing 12" ACT, Building A
HMS-R1823-15C	Drywall and Joint Compound North West Wall at Corner in Room 111 in Building A
HMS-R1823-15D	Drywall and Joint Compound South West Wall in Room Between Classrooms 108 & 208, Building A
HMS-R1823-15E	Drywall and Joint Compound South West Corner of Wall in Classroom 112, Building A

D:\Clients\ChicoUSD\R1823\BulkAnReq\01.wpd

Delivered by: \_\_\_\_\_ Date: \_\_\_\_\_ Time: \_\_\_\_\_

Received by: *R. Beall* Date: 11-15-05 Time: 12:55 PM

ASBESTECH  
 6825 Fair Oaks Blvd., Suite 103  
 Carmichael, California 95608  
 Tel.(916) 481-8902 Fax (916) 481-3975

**Client:**

Hazard Management Services  
 4200 Rocklin Rd., Suite 7  
 Rocklin, CA 95677

**Job:**

R1823 Chico USD  
 Bidwell JHS  
 Chico, Ca

**BULK ASBESTOS ANALYSIS REPORT**

LAB JOB # 47485-2

Date/Time Collected: 11/14/05

Date Received: 11/15/05

NVLAP # 101442

DOHS # 1153

Date Analyzed: 11/17/05

<u>Sample No.</u>	<u>Color/Description</u>	<u>% Type Asbestos</u>	<u>Other Materials</u>
HMS-R1823-06A	Tan wall plaster, small wall column in classroom 207, bldg. C	1-2 CHRYSOTILE	Granular Mins.
06B	Tan wall plaster where new door is, south wall of classroom 207, bldg. C	NONE DETECTED	Granular Mins.
06C	Tan wall plaster, west wall by door in storage room between classrooms 206 & 207, bldg. C	NONE DETECTED	Granular Mins.
06D	Tan wall plaster, lower east wall in classroom 206, bldg. C	NONE DETECTED	Granular Mins.
07A	Green 9" VFT, east side under table extension, classroom 207, bldg. C	2-7 CHRYSOTILE	Granular Mins.
	Black mastic	1-5 CHRYSOTILE	Tar Binder
08A	Beige 9" VFT, in room between classrooms 108 & 208 at doorway to classroom 109, bldg. A.	1-5 CHRYSOTILE	Granular Mins.
	Black mastic	1-5 CHRYSOTILE	Tar Binder

THE ANALYSIS USES POLARIZED LIGHT MICROSCOPY AND DISPERSION STAINING FOLLOWING E.P.A. METHOD 600/R-93/116. NON-FRIABLE MATERIALS WERE ANALYZED APPLYING THE SAME METHOD. THE LOWER DETECTION LIMIT IS <1 % WITH THE PROVISIO THAT PLM MAY NOT DETECT FIBERS <0.25 MICRONS IN DIAMETER THAT MAY BE PRESENT IN SAMPLES SUCH AS FLOOR TILES. IN ACCORDANCE WITH TITLE 22, CCR, SECTION 66261.24(a)(2)(A), THE MCL IS 1%. SAMPLES WERE NOT COLLECTED BY ASBESTECH. THIS REPORT MUST NOT BE REPRODUCED EXCEPT IN FULL WITHOUT THE APPROVAL OF ASBESTECH. THIS REPORT RELATES ONLY TO THE ITEMS TESTED. THIS REPORT MUST NOT BE USED TO CLAIM PRODUCT ENDORSEMENT BY N.V.L.A.P. OR ANY AGENCY OF THE U.S. GOVERNMENT. ASBESTECH ACCEPTS TECHNICAL RESPONSIBILITY FOR THIS REPORT AND DATE OF ISSUE.

**NVLAP**

ANALYST SIGNATURE: \_\_\_\_\_

*Juan J. Jyler*

ASBESTECH  
 6825 Fair Oaks Blvd., Suite 103  
 Carmichael, California 95608  
 Tel.(916) 481-8902 Fax (916) 481-3975

**Client:**  
 Hazard Management Services  
 4200 Rocklin Rd., Suite 7  
 Rocklin, CA 95677

**Job:**  
 R1823 Chico USD  
 Bidwell JHS  
 Chico, Ca

**BULK ASBESTOS ANALYSIS REPORT**

LAB JOB # 47485-5  
 Date/Time Collected: 11/14/05  
 Date Received: 11/15/05

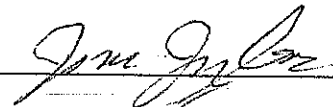
NVLAP # 101442  
 DOHS # 1153  
 Date Analyzed: 11/17/05

<i>Sample No.</i>	<i>Color/Description</i>	<i>% Type Asbestos</i>	<i>Other Materials</i>
HMS-R1823-15C	White drywall, NW wall at corner in room 111 in bldg. A	NONE DETECTED	Gypsum Cellulose
	White joint compound	1-2 CHRYSOTILE	Granular Mins.
	Composite	<1 CHRYSOTILE	Gypsum Cellulose Granular Mins.
15D	White drywall, SW wall in room between classrooms 108 & 208, bldg. A	NONE DETECTED	Gypsum Cellulose
	White joint compound	1-2 CHRYSOTILE	Granular Mins.
	Composite	<1 CHRYSOTILE	Gypsum Cellulose Granular Mins.
15E	White drywall, SW corner of wall in classroom 112, bldg. A	NONE DETECTED	Gypsum Cellulose
	White joint compound	1-2 CHRYSOTILE	Granular Mins.
	Composite	<1 CHRYSOTILE	Gypsum Cellulose Granular Mins.

THE ANALYSIS USES POLARIZED LIGHT MICROSCOPY AND DISPERSION STAINING FOLLOWING E.P.A. METHOD 600/R-93/116. NON-FRIABLE MATERIALS WERE ANALYZED APPLYING THE SAME METHOD. THE LOWER DETECTION LIMIT IS <1 % WITH THE PROVISIO THAT PLM MAY NOT DETECT FIBERS <0.25 MICRONS IN DIAMETER THAT MAY BE PRESENT IN SAMPLES SUCH AS FLOOR TILES. IN ACCORDANCE WITH TITLE 22, CCR, SECTION 66261.24(a)(2)(A), THE MCL IS 1%. SAMPLES WERE NOT COLLECTED BY ASBESTECH. THIS REPORT MUST NOT BE REPRODUCED EXCEPT IN FULL WITHOUT THE APPROVAL OF ASBESTECH. THIS REPORT RELATES ONLY TO THE ITEMS TESTED. THIS REPORT MUST NOT BE USED TO CLAIM PRODUCT ENDORSEMENT BY N.V.L.A.P. OR ANY AGENCY OF THE U.S. GOVERNMENT. ASBESTECH ACCEPTS TECHNICAL RESPONSIBILITY FOR THIS REPORT AND DATE OF ISSUE.

**NVLAP**

ANALYST SIGNATURE: \_\_\_\_\_



ASBESTECH  
 6825 Fair Oaks Blvd., Suite 103  
 Carmichael, California 95608  
 Tel.(916) 481-8902 Fax (916) 481-3975

**Client:**  
 Hazard Management Services  
 4200 Rocklin Rd., Suite 7  
 Rocklin, CA 95677

**Job:**  
 R1823 Chico USD  
 Bidwell JHS  
 Chico, Ca

**BULK ASBESTOS ANALYSIS REPORT**

LAB JOB # 47485-3  
 Date/Time Collected: 11/14/05  
 Date Received: 11/15/05

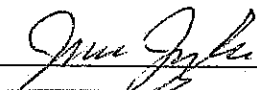
NVLAP # 101442  
 DOHS # 1153  
 Date Analyzed: 11/17/05

<u>Sample No.</u>	<u>Color/Description</u>	<u>% Type Asbestos</u>	<u>Other Materials</u>
HMS-R1823-09A	Light brown with brown streaks 12" VFT, at west side by door to classroom 208, bldg. A	1-2 CHRYSOTILE	Granular Mins.
	Black mastic	1-5 CHRYSOTILE	Tar Binder
10A	Brown base cove mastic, SE side at base of wood cabinet of table extension classroom 206, bldg. C	<1 FIBROUS TREMOLITE	Synthetics Talc
11A	Brown base cove mastic, west side at extension wood table base, classroom 207, bldg. C	<1 FIBROUS TREMOLITE	Synthetics Talc
12A	White exterior stucco below register grill at south wall classroom 207, bldg. C	NONE DETECTED	Granular Mins.
12B	White exterior stucco below register grill at south wall classroom 206, bldg. C	NONE DETECTED	Granular Mins.
13A	Brown/white 12" ACT south side of classroom near door, classroom 207, bldg. C	NONE DETECTED	Cellulose

THE ANALYSIS USES POLARIZED LIGHT MICROSCOPY AND DISPERSION STAINING FOLLOWING E.P.A METHOD 600/R-93/116. NON-FRIABLE MATERIALS WERE ANALYZED APPLYING THE SAME METHOD. THE LOWER DETECTION LIMIT IS <1 % WITH THE PROVISIO THAT PLM MAY NOT DETECT FIBERS <0.25 MICRONS IN DIAMETER THAT MAY BE PRESENT IN SAMPLES SUCH AS FLOOR TILES. IN ACCORDANCE WITH TITLE 22, CCR, SECTION 66261.24(a)(2)(A), THE MCL IS 1%. SAMPLES WERE NOT COLLECTED BY ASBESTECH. THIS REPORT MUST NOT BE REPRODUCED EXCEPT IN FULL WITHOUT THE APPROVAL OF ASBESTECH. THIS REPORT RELATES ONLY TO THE ITEMS TESTED. THIS REPORT MUST NOT BE USED TO CLAIM PRODUCT ENDORSEMENT BY N.V.L.A.P. OR ANY AGENCY OF THE U.S. GOVERNMENT. ASBESTECH ACCEPTS TECHNICAL RESPONSIBILITY FOR THIS REPORT AND DATE OF ISSUE.

**NVLAP**

ANALYST SIGNATURE: \_\_\_\_\_



ASBESTECH  
 6825 Fair Oaks Blvd., Suite 103  
 Carmichael, California 95608  
 Tel.(916) 481-8902 Fax (916) 481-3975

**Client:**  
 Hazard Management Services  
 4200 Rocklin Rd., Suite 7  
 Rocklin, CA 95677

**Job:**  
 R1823 Chico USD  
 Bidwell JHS  
 Chico, Ca

**BULK ASBESTOS ANALYSIS REPORT**

LAB JOB # 47485-1  
 Date/Time Collected: 11/14/05  
 Date Received: 11/15/05

NVLAP # 101442  
 DOHS # 1153  
 Date Analyzed: 11/17/05

<i>Sample No.</i>	<i>Color/Description</i>	<i>% Type Asbestos</i>	<i>Other Materials</i>
HMS-R1823-01A	Gray/white 2X4 drop in ceiling tile, north area of classroom 108, bldg. A	NONE DETECTED	Cellulose Fibrous Glass
02A	Brown/white 12" acoustic ceiling tile, mezzanine ceiling in classroom 109, bldg. A	NONE DETECTED	Cellulose
03A	Light brown base cove mastic, lower east wall classroom 109, bldg. A	1-5 CHRYSOTILE	Synthetics
03B	Dark brown base cove mastic, west wall room 208, bldg. A	<1 CHRYSOTILE	Synthetics Wollastonite
04A	White exterior stucco, east wall of bldg. by door to classroom 109, bldg. A	NONE DETECTED	Granular Mins.
04B	White exterior stucco, north side of bldg. by door to classroom 109, bldg. A	NONE DETECTED	Granular Mins.
04C	White exterior stucco, west wall of bldg. by door to classroom 208, bldg. A	NONE DETECTED	Granular Mins.
05A	Blank sink from classroom 207, bldg. C	5-10 CHRYSOTILE	Opagues

THE ANALYSIS USES POLARIZED LIGHT MICROSCOPY AND DISPERSION STAINING FOLLOWING E.P.A. METHOD 600/R-93/116. NON-FRIABLE MATERIALS WERE ANALYZED APPLYING THE SAME METHOD. THE LOWER DETECTION LIMIT IS <1 % WITH THE PROVISIO THAT PLM MAY NOT DETECT FIBERS <0.25 MICRONS IN DIAMETER THAT MAY BE PRESENT IN SAMPLES SUCH AS FLOOR TILES. IN ACCORDANCE WITH TITLE 22, CCR, SECTION 66261.24(a)(2)(A), THE MCL IS 1 %. SAMPLES WERE NOT COLLECTED BY ASBESTECH. THIS REPORT MUST NOT BE REPRODUCED EXCEPT IN FULL WITHOUT THE APPROVAL OF ASBESTECH. THIS REPORT RELATES ONLY TO THE ITEMS TESTED. THIS REPORT MUST NOT BE USED TO CLAIM PRODUCT ENDORSEMENT BY N.V.L.A.P. OR ANY AGENCY OF THE U.S. GOVERNMENT. ASBESTECH ACCEPTS TECHNICAL RESPONSIBILITY FOR THIS REPORT AND DATE OF ISSUE.

**NVLAP**

ANALYST SIGNATURE: \_\_\_\_\_

*[Handwritten Signature]*



**BULK MATERIAL Analysis Request Form for Hazard Management Services, Inc.**

200 Rocklin Road, Suite 7  
 Rocklin, CA 95677  
 (916) 632-6800  
 (916) 632-6841 FAX

JOB I.D.: R1823      CLIENT: Chico USD      COLLECTED BY: Rick Beall  
 DATE COLLECTED: 11/14/05      DATE SUBMITTED: 11/15/05      LAB SUBMITTED TO: Asbestech

**SPECIAL INSTRUCTIONS:**

ANALYSIS REQUESTED: Asbestos by PLM with Dispersion Staining      TURNAROUND TIME: 72 Hours

JOB SITE: Bidwell Junior High School  
 2376 North Avenue  
 Chico, CA 95926

SAMPLE #	MATERIAL DESCRIPTION/LOCATION
HMS-R1823-01A	2 X 4 Drop in Ceiling Tile - North Area of Classroom 108, Building A
HMS-R1823-02A	12" Acoustical Ceiling Tile, Mezzanine Ceiling in Classroom 109, Building A
HMS-R1823-03A	Basecove Mastic - Light Brown Colored, Lower East Wall, Classroom 109, Building A
HMS-R1823-03B	Basecove Mastic - Dark Brown Colored, West Wall Room 208, Building A
HMS-R1823-04A	Exterior Stucco, East Wall of Building by Door to Classroom 109, Building A
HMS-R1823-04B	Exterior Stucco, North Side of Building by Door to Classroom 109, Building A
HMS-R1823-04C	Exterior Stucco, West Wall of Building by Door to Classroom 208, Building A
HMS-R1823-05A	Black Sink from Classroom 207, Building C
HMS-R1823-06A	Tan Wall Plaster, Small Wall Column in Classroom 207, Building C
HMS-R1823-06B	Tan Wall Plaster Where new Door is Located, South Wall of Classroom 207, Building C
HMS-R1823-06C	Tan Wall Plaster, West Wall by Door in Storage Room Between Classrooms 206 & 207, Building C
HMS-R1823-06D	Wall Plaster Lower East Wall in Classroom 206, Building C
HMS-R1823-07A	9" VFT and Black Mastic East Side Under Table Extension, Classroom 207, Building C
HMS-R1823-08A	9" VFT and Black Mastic in Room Between Classrooms 108 & 208 at Doorway to Classroom 109, Building A
HMS-R1823-09A	12" VFT (Light Brown with Brown Streaks) & Black Mastic at West Side by Door Classroom 208, Building A
HMS-R1823-10A	Brown Basecove Mastic, South East Side at Base of Wood Cabinet of Table Extension Classroom 206, Building C

Delivered by: Rick Beall      Date: 11-15-05      Time: 12:55 pm  
 Received by: Winton      Date: 11-15-05      Time: 12:55 pm

**BULK MATERIAL Analysis Report Form for Hazard Management Services, Inc.**

4200 Rocklin Road, Suite 7  
Rocklin, CA 95677  
(916) 632-6800  
FAX (916) 632-6841

**JOB I.D.:** R1823      **CLIENT:** Chico USD      **COLLECTED BY:** Rick Beall  
**DATE COLLECTED:** 11/14/05      **DATE SUBMITTED:** 11/15/05      **LAB SUBMITTED TO:** Asbestech

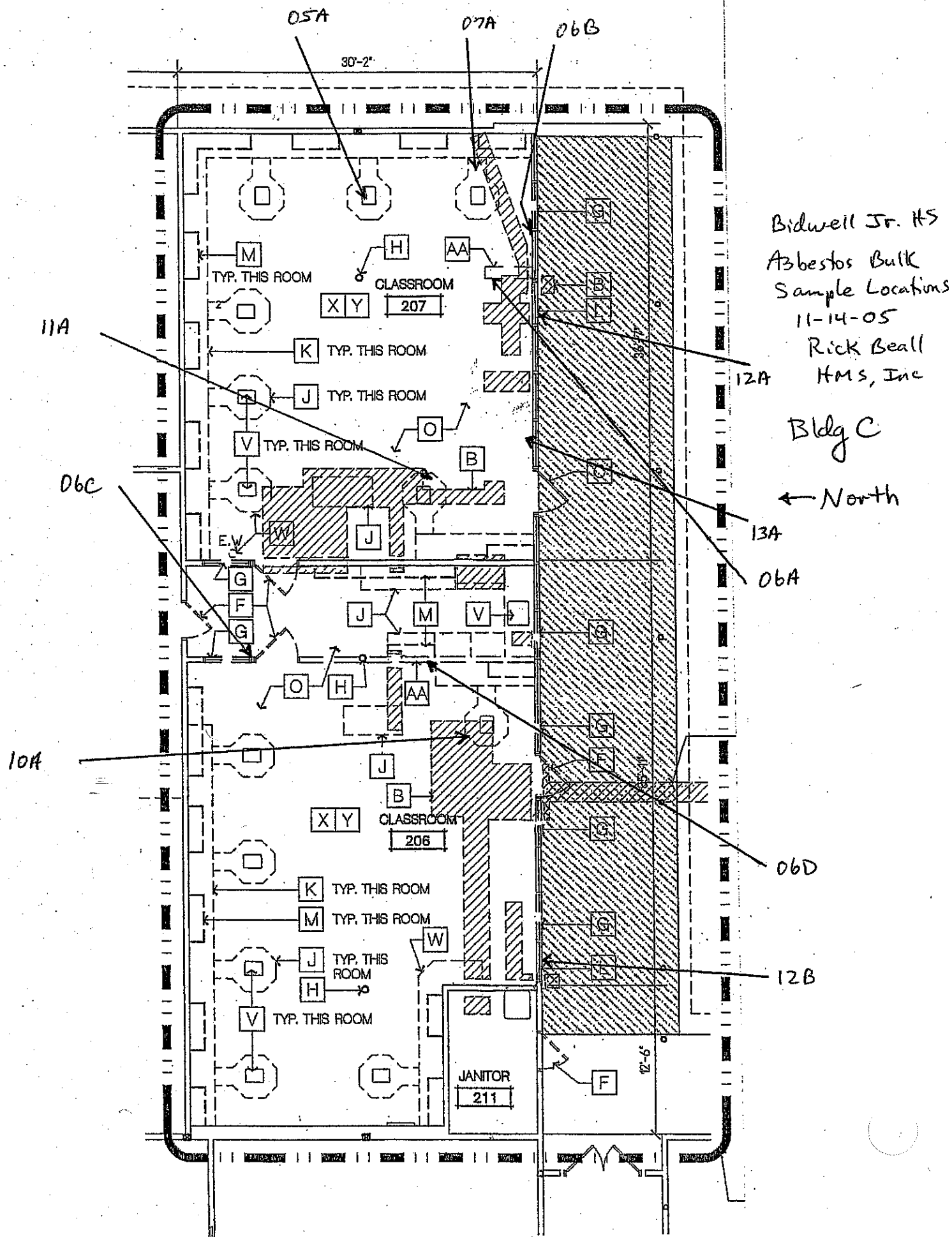
**SPECIAL INSTRUCTIONS:**

**ANALYSIS REQUESTED:** Asbestos by PLM with Dispersion Staining      **TURNAROUND TIME:** Hours

**JOB SITE:** Bidwell Junior High School  
2376 North Avenue  
Chico, CA 95926

SAMPLE #	RESULTS	MATERIAL DESCRIPTION/LOCATION
HMS-R1823-08A	1-5% CHRYSOTILE (In VFT) 1-5% CHRYSOTILE (In Mastic)	9" VFT and Black Mastic in Room Between Classrooms 108 & 208 at Doorway to Classroom 109, Building A
HMS-R1823-09A	1-2% CHRYSOTILE (In VFT) 1-5% CHRYSOTILE (In Mastic)	12" VFT (Light Brown with Brown Streaks) & Black Mastic at West Side by Door Classroom 208, Building A
HMS-R1823-10A	<1% FIBROUS TREMOLITE	Brown Basecove Mastic, South East Side at Base of Wood Cabinet of Table Extension Classroom 206, Building C
HMS-R1823-11A	<1% FIBROUS TREMOLITE	Brown Basecove Mastic, West Side at Extension Wooden Table Base, Classroom 207, Building C
HMS-R1823-12A	NONE DETECTED	Exterior Stucco Below Register Grill at South Wall Classroom 207, Building C
HMS-R1823-12B	NONE DETECTED	Exterior Stucco Below Register Grill at South Wall Classroom 206, Building C
HMS-R1823-13A	NONE DETECTED	12" ACT, South Side of Classroom Near Door, Classroom 207, Building C
HMS-R1823-14A	1-2% CHRYSOTILE	Drywall Joint Compound at Metal Corner of Wall at Mezzanine by Ladder in Classroom 108, Building A
HMS-R1823-15A	NONE DETECTED (In Drywall) 1-2% CHRYSOTILE (Joint Compound) <1% CHRYSOTILE (Composite)	Drywall and Joint Compound North East Corner of Wall in Room 112 (Finish Room) in Building A





Bidwell Jr. HS  
 Asbestos Bulk  
 Sample Locations  
 11-14-05  
 Rick Beall  
 HMS, Inc

Bldg C  
 ← North

11A

06C

10A

05A

07A

06B

12A

13A

06A

06D

12B

M TYP. THIS ROOM

H CLASSROOM

XY 207

K TYP. THIS ROOM

J TYP. THIS ROOM

V TYP. THIS ROOM

E.W.

G

F

G

J

M

V

O

H

AA

J

B

XY CLASSROOM 206

K TYP. THIS ROOM

M TYP. THIS ROOM

J TYP. THIS ROOM

H

V TYP. THIS ROOM

JANITOR 211

F

9'-6"

30'-2"

# DEMOLITION PLAN KEYNOTES

- A** EXISTING CASEWORK TO REMAIN - PROTECT IN PLACE DURING CONSTRUCTION
- B** SAW CUT AND REMOVE EXISTING CONCRETE SLAB ON GRADE FOR UTILITIES RENOVATION. DO NOT CUT (E) FLOOR CURB & FOUNDATION BELOW AT WALLS, TYP.
- C** EXISTING DOOR MODIFIED IN DSA APPL #02-101976; PAINT ONLY; SEE DOOR SCHEDULE
- D** (E) INTERIOR WALLS - REMOVE (E) NON-STRUCTURAL WOOD PANELS AND (E) GYP. BD. ON BOTH SIDES OF THE EXISTING WOOD STUDS, TYP.
- E** REMOVE DOOR; FRAME TO REMAIN. COORD. NEW DOOR HARDWARE WITH EXIST. FRAME
- F** REMOVE EXISTING DOOR AND FRAME, INCLUDING SIDE LITE & TRANSOM, IF ANY, BACK TO R.O.
- G** REMOVE EXISTING WINDOW
- H** EXISTING COLUMN TO REMAIN - PROTECT.
- J** REMOVE EXISTING FULL HEIGHT STORAGE CABINETS, BASE CABINET, SHELVING, COUNTER TOP AND BACK SPLASH.
- K** REMOVE EXISTING COUNTER TOP AND BACK SPLASH.
- L** REMOVE BUILT-IN UNIT VENTILATOR CABINET & ATTACHED METAL SHELVING; SEE MECH. DWGS. FOR ADDL REQMTS
- M** REMOVE EXISTING UPPER WALL- HUNG CABINETS.
- N** NOT USED.
- O** REMOVE EXISTING 4" BASE. (E) FLOOR TILE REMOVED BY SEPARATE HAZMAT ABATEMENT CONTRACTOR, COORDINATE AS REQUIRED.
- P** NOT USED.
- Q** REMOVE (E) EXTERIOR WINDOW CURTAIN TRACK AND CURTAINS IN THIS ROOM
- R** NOT USED.
- S** (E) PLASTER CEILING THIS ROOM REMOVED BY SEPARATE HAZMAT ABATEMENT CONTRACTOR, COORDINATE AS REQUIRED.
- T** NOT USED.
- U** EXISTING STUD WALL WITH TELECOMMUNICATIONS EQUIP. TO REMAIN UNDISTURBED AND PROTECTED FROM NEW CONSTRUCTION WORK.
- V** REMOVE EXISTING FIXTURE. SEE PLUMBING DWGS. FOR DISPOSITION OF SERVICE LINES.
- W** REMOVE (E) EYE WASH
- X** REMOVE EXISTING WALL MOUNTED SPEAKERS, TELEPHONES, CLOCKS, FLAGPOLES, SOAP DISPENSERS, FIRE EXTINGUISHERS & RELATED WIRING & WIRE MOLD FOR INSTALLATION AS SHOWN ON CONSTRUCTION DWGS.
- Y** REMOVE (E) CHALKBOARD(S) TACKBOARD(S) AND WHITEBOARD(S) THIS ROOM, UNLESS OTHERWISE NOTED.
- Z** EXISTING TOOLS & EQUIPMENT. REMOVE & DELIVER TO OWNERS ON-SITE STORAGE LOCATION OR TRANSPORTATION.
- AA** REMOVE (E) WALL - COORDINATE WITH ELECTRICAL CONTRACTOR FOR CONDUITS TO REMAIN - SEE ELECTRICAL & MECHANICAL DWGS.

## LEGEND

- ==== (E) WALL TO REMAIN
- == == (E) WALL TO BE REMOVED

23379838  
 IN CASE OF EMERGENCY OR SPILL, CALL THE NATIONAL RESPONSE CENTER 1-800-424-8802. WITHIN CALIFORNIA, CALL 1-800-852-7550

<b>UNIFORM HAZARDOUS WASTE MANIFEST</b>		1. Generator's US EPA ID No. <b>CAD981415284</b>		Manifest Document No. <b>7 9 8 3 8</b>		2. Page 1 of 1		Information in the shaded areas is not required by Federal law.					
3. Generator's Name and Mailing Address <b>CHILD UNIFIED SCHOOL DISTRICT 2455 CARMICHAEL DR. CHILD, CA 95928</b>						A. State Manifest Document Number <b>23379838</b>							
4. Generator's Phone <b>530 895-3195</b>						B. State Generator's ID							
5. Transporter 1 Company Name <b>A/C Industrial Services Corp.</b>				6. US EPA ID Number <b>CAD983661463</b>		C. State Transporter's ID [Reserved.]							
7. Transporter 2 Company Name						D. Transporter's Phone <b>530-343-5488</b>							
9. Designated Facility Name and Site Address <b>Hay Road Landfill 6426 Hay Road Vacaville, CA 95687</b>						G. State Facility's ID							
10. US EPA ID Number <b>CAD982042475</b>						H. Facility's Phone <b>800-208-2370</b>							
11. US DOT Description (including Proper Shipping Name, Hazard Class, and ID Number) <b>a. RQ Asbestos, 9, NA2212, PGIII</b>						12. Containers No. Type		13. Total Quantity		14. Unit Wt/Vol		I. Waste Number	
						<b>001 BA 000001</b>		<b>1</b>		<b>1</b>		<b>151</b>	
b.										State		EPA/Other	
c.										State		EPA/Other	
d.										State		EPA/Other	
1. Additional Descriptions for Materials Listed Above <b>(1) 1X BAG</b>						K. Handling Codes for Wastes Listed Above a. <b>03</b>							
15. Special Handling Instructions and Additional Information  <b>Contact : A/C Industrial Services -- 24 Hour Emergency Service -- 800-343-5488 JOB# 05-0433</b>													
16. GENERATOR'S CERTIFICATION: I hereby declare that the contents of this consignment are fully and accurately described above by proper shipping name and are classified, packed, marked, and labeled, and are in all respects in proper condition for transport by highway according to applicable international and national government regulations.  If I am a large quantity generator, I certify that I have a program in place to reduce the volume and toxicity of waste generated to the degree I have determined to be economically practicable and that I have selected the practicable method of treatment, storage, or disposal currently available to me which minimizes the present and future threat to human health and the environment; OR, if I am a small quantity generator, I have made a good faith effort to minimize my waste generation and select the best waste management method that is available to me and that I can afford.													
Printed/Typed Name <b>Leroy A. Christophersen</b>				Signature <i>Leroy A. Christophersen</i>				Month <b>11</b>		Day <b>16</b>		Year <b>05</b>	
17. Transporter 1 Acknowledgement of Receipt of Materials Printed/Typed Name <b>ALEX NEEL</b>				Signature <i>Alex Neel</i>				Month <b>11</b>		Day <b>16</b>		Year <b>05</b>	
18. Transporter 2 Acknowledgement of Receipt of Materials Printed/Typed Name				Signature				Month		Day		Year	
19. Discrepancy Indication Space													
20. Facility Owner or Operator Certification of receipt of hazardous materials covered by this manifest except as noted in Item 19. Printed/Typed Name <b>Dea Williams</b>													
Signature <i>Dea Williams</i>				Month <b>11</b>				Day <b>17</b>		Year <b>05</b>			

DO NOT WRITE BELOW THIS LINE.

Yellow: TSDf SENDS THIS COPY TO GENERATOR WITHIN 30 DAYS.  
 (Generators who submit hazardous waste for transport out-of-state, produce completed copy of this copy and send to DTSC within 30 days.)



# Bulk Asbestos Analysis

(EPA Method 600/R-93-116, Visual Area Estimation)

Chico Unified School Dist  
Leroy Christophersen

2455 Carmichael Drive  
Chico, CA 95928

Client ID: 2921  
Report Number: B073182  
Date Received: 05/18/05  
Date Analyzed: 05/20/05  
Date Printed: 05/20/05  
First Reported: 05/20/05

Job ID/Site: Bidwell Jr. High

FASI Job ID: 2921-75

Date(s) Collected: 05/17/2005

Total Samples Submitted: 5

Total Samples Analyzed: 5

Sample ID	Lab Number	Asbestos Type	Percent in Layer	Asbestos Type	Percent in Layer	Asbestos Type	Percent in Layer
<b>BDS1</b>	10416243						
Layer: Off-White Plaster			ND				
Layer: Paint			ND				
Total Composite Values of Fibrous Components:		Asbestos (ND)					
Cellulose (Trace)							
<b>BDS2</b>	10416244						
Layer: Tan Plaster			ND				
Layer: White Non-Fibrous Material			ND				
Layer: Paint			ND				
Total Composite Values of Fibrous Components:		Asbestos (ND)					
Cellulose (Trace)							
<b>BDS3</b>	10416245						
Layer: Tan Plaster			ND				
Layer: White Non-Fibrous Material			ND				
Layer: Paint			ND				
Total Composite Values of Fibrous Components:		Asbestos (ND)					
Cellulose (Trace)							
<b>BDS4</b>	10416246						
Layer: Tan Plaster			ND				
Layer: White Non-Fibrous Material			ND				
Layer: Paint			ND				
Total Composite Values of Fibrous Components:		Asbestos (ND)					
Cellulose (Trace)							
<b>BDS5</b>	10416247						
Layer: Off-White Plaster			ND				
Layer: Paint			ND				
Total Composite Values of Fibrous Components:		Asbestos (ND)					
Cellulose (Trace)							



# Forensic Analytical

Client Name: Chico Unified School Dist

Report Number: B073182

Date Printed: 05/20/05

Sample ID	Lab Number	Asbestos Type	Percent in Layer	Asbestos Type	Percent in Layer	Asbestos Type	Percent in Layer
-----------	------------	---------------	------------------	---------------	------------------	---------------	------------------

James Flores, Laboratory Supervisor, Hayward Laboratory

Note: Limit of Quantification ('LOQ') = 1%. 'Trace' denotes the presence of asbestos below the LOQ. 'ND' = 'None Detected'.

Analytical results and reports are generated by Forensic Analytical at the request of and for the exclusive use of the person or entity (client) named on such report. Results, reports or copies of same will not be released by Forensic Analytical to any third party without prior written request from client. This report applies only to the sample(s) tested. Supporting laboratory documentation is available upon request. This report must not be reproduced except in full, unless approved by Forensic Analytical. The client is solely responsible for the use and interpretation of test results and reports requested from Forensic Analytical. This report must not be used by the client to claim product endorsement by NVLAP or any other agency of the U.S. Government. Forensic Analytical is not able to assess the degree of hazard resulting from materials analyzed. Forensic Analytical reserves the right to dispose of all samples after a period of thirty (30) days, according to all state and federal guidelines, unless otherwise specified. All samples were received in acceptable condition unless otherwise noted.



2981-175  
18001-



Forensic Analytical

Analysis Request Form

Client Name & Address: Chico Unified School District 2455 Carmichael Drive Chico, CA 95928		P.O. #: 050289 Date: 5/17/05
Contact: Leroy Christophersen Phone #: 530 891-3195 Fax#: (530) 891-3190		Turn Around Time: _____ hr/ 12hr / 24hr (48 hr) ext: _____ Due Date: / / Due Time: : am/pm <input checked="" type="checkbox"/> PLM: <input checked="" type="checkbox"/> Standard / <input type="checkbox"/> Point Count <input type="checkbox"/> PCM: NIOSH 7400
Site: Bidwell Jr. High		<input type="checkbox"/> TEM Air: <input type="checkbox"/> AHERA / <input type="checkbox"/> Yamate2 / <input type="checkbox"/> NIOSH 7402 <input type="checkbox"/> TEM Bulk: <input type="checkbox"/> Quantitative / <input type="checkbox"/> Qualitative / <input type="checkbox"/> Chatfield <input type="checkbox"/> TEM Water: <input type="checkbox"/> Potable / <input type="checkbox"/> Non-Potable / <input type="checkbox"/> Wt % <input type="checkbox"/> TEM Microvac
Job:		<input type="checkbox"/> Special Project: <input type="checkbox"/> Metals Analysis: Method _____ Matrix: _____ Analytes: _____

Comments: email lchristo@chico.usd.org

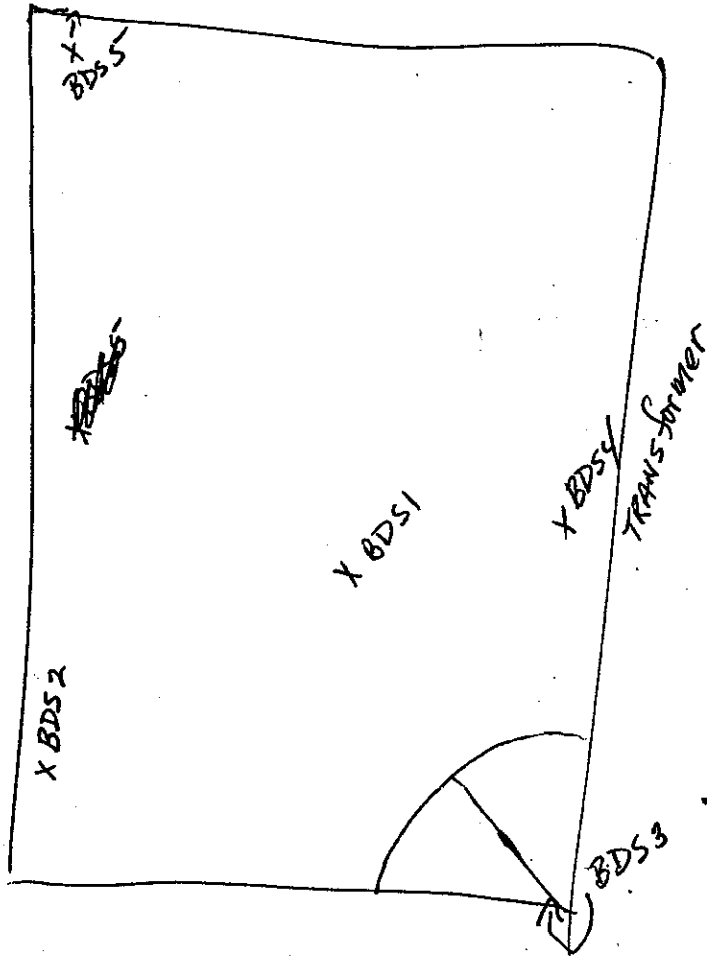
Sample ID	Date/Time	Sample Location/Description	FOR AIR SAMPLES ONLY				Sample Area or Air Volume
			Type	Time On/Off	Avg. LPM	Total Time	
BDS1	5/17	MPR Closet / ceiling	A P C				
BDS2	5/17	MPR Closet / surface	A P C				
BDS3	5/17	MPR Closet / surface	A P C				
BDS4	5/17	MPR Closet / surface	A P C				
BDS5	5/17	MPR Closet	A P C				
			A P C				
			A P C				
			A P C				
			A P C				

Sampled by: \_\_\_\_\_ Date: / / Time: :

Shipped via:  Fed Ex  Airborne  UPS  US Mail  Courier  Drop Off  Other:

Relinquished by: Date / Time:	Relinquished by: Date / Time:	Relinquished by: Date / Time:
Received by: Melissa Crenna Date / Time: 5/18/05 @ 10:00 AM	Received by: Date / Time:	Received by: Date / Time:
Condition Acceptable? <input checked="" type="checkbox"/> Yes <input type="checkbox"/> No	Condition Acceptable? <input type="checkbox"/> Yes <input type="checkbox"/> No	Condition Acceptable? <input type="checkbox"/> Yes <input type="checkbox"/> No

MPR closet



Maintenance and Operations  
2455 Carmichael Drive  
Chico, CA 95928  
Phone: (530) 891-3195  
Fax: (530) 891-3190

# Chico Unified School District

Fed Ex Airbill #8358 1795 0790

May 17, 2005

Forensic Analytical Specialties, Inc.  
3777 Depot Road, Suite 409  
Hayward, CA 94545

Re: Bidwell Junior High School MPR

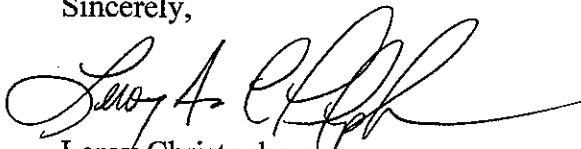
To Whom It May Concern:

Please test the enclosed samples from the Bidwell Junior High School MPR Closet for asbestos. We would like a 48-hour turnaround on the samples. Please fax the results to us as soon as they are available. Our fax number is (530) 891-3190.

Site Sampled:	Bidwell Junior High School
Location:	MPR Closet Ceiling
Date Sampled:	May 17, 2005
Number of Samples:	One (1) - #BDS1
Location:	MPR Closet Surface
Date Sampled:	May 17, 2005
Number of Samples:	Three (3) - #BDS2, #BDS3, #BDS4
Location:	MPR Closet
Date Sampled:	May 17, 2005
Number of Samples:	One (1) - #BDS5

Thank you for your prompt response to this request.

Sincerely,



Leroy Christophersen  
Safety & Loss Coordinator

LC:dlg  
Enclosures

99167490

IN CASE OF EMERGENCY OR SPILL, CALL THE NATIONAL RESPONSE CENTER: 1-800-424-8802; WITHIN CALIFORNIA, CALL 1-800-852-9916

<b>UNIFORM HAZARDOUS WASTE MANIFEST</b>		1. Generator's US EPA ID No. CAP 98141521967490	Manifest Document No. 1 of 1	2. Page 1	Information in the shaded areas is not required by Federal law.
3. Generator's Name and Mailing Address Chico Unified School District 2455 CARMICHAEL DRIVE CHICO, CA 95924			A. State Manifest Document Number 99167490		
4. Generator's Phone 530, 621-2157		B. State Generator ID			
5. Transporter 1 Company Name Delta Oil Field		6. US EPA ID Number CAP 980695605		C. State Transporter ID (Reserved)	
7. Transporter 2 Company Name		8. US EPA ID Number		D. Transporter's Phone 530, 621-2157	
9. Designated Facility Name and Site/Address NWSH 4 K 22, 11 4236 HAYWARD AVE DACKVILLE, CA 95827		10. US EPA ID Number CAP 981214475		E. State Transporter ID (Reserved)	
				F. Transporter's Phone	
				G. State Facility ID	
				H. Facility's Phone	
11. US DOT Description (including Proper Shipping Name, Hazard Class, and ID Number)			12. Containers	13. Total Quantity	14. Unit
a. RQ Asbestos, 9, NA2813, PG III			No. Type		Wt/Vol
			001 C 1000	35	Y
b.					
c.					
d.					
Additional Descriptions for Materials Listed Above			K. Handling Codes for Materials Listed Above		
15. Special Handling Instructions and Additional Information EPA Region IX - 13 Hawthorne St. SAN FRANCISCO, CA. Asbestos Removal Requirement HOC FRGI Bagged, Sealed Labeled.					
16. GENERATOR'S CERTIFICATION: I hereby declare that the contents of this consignment are fully and accurately described above by proper shipping name and are classified, packed, marked, and labeled, and are in all respects in proper condition for transport by highway according to applicable international and national government regulations.					
If I am a large quantity generator, I certify that I have a program in place to reduce the volume and toxicity of waste generated to the degree I have determined to be economically practicable and that I have selected the practicable method of treatment, storage, or disposal currently available to me which minimizes the present and future threat to human health and the environment; OR, if I am a small quantity generator, I have made a good faith effort to minimize my waste generation and select the best waste management method that is available to me and that I can afford.					
Printed/Typed Name Nathan Graham		Signature Nathan Graham		Month Day Year 03 21 05	
17. Transporter 1 Acknowledgement of Receipt of Materials Printed/Typed Name DELTA OIL FIELD SERVICES INC.		Signature		Month Day Year 03 23 05	
18. Transporter 2 Acknowledgement of Receipt of Materials Printed/Typed Name		Signature		Month Day Year	
19. Discrepancy Indication Space					
20. Facility Owner or Operator Certification of receipt of hazardous materials covered by this manifest except as noted in Item 19. Printed/Typed Name		Signature		Month Day Year 03 23 05	

MAR 31 2005

DO NOT WRITE BELOW THIS LINE.

9916/490  
 IN CASE OF EMERGENCY OR SPILL, CALL THE NATIONAL RESPONSE CENTER 1-800-424-8802. WITHIN CALIFORNIA, CALL 1-800-852-

<b>UNIFORM HAZARDOUS WASTE MANIFEST</b>		1. Generator's US EPA ID No. <i>CA098V4152196749D</i>	Manifest Document No. <i>1 of 1</i>		2. Page 1	Information in the shaded areas is not required by Federal law.
3. Generator's Name and Mailing Address <i>Chico Unified School District 2455 Carmichael Drive Chico, CA. 95528</i>			A. State Manifest Document Number <b>99167490</b>		B. State Generator ID	
4. Generator's Phone <i>(530) 621-2157</i>			C. State Transporter ID (Reserved)		D. Transporter's Phone <i>(530) 621-2157</i>	
5. Transporter 1 Company Name <i>Delta Oilfield</i>		6. US EPA ID Number <i>CA0980695605</i>		E. State Transporter ID (Reserved)		F. Transporter's Phone
7. Transporter 2 Company Name		8. US EPA ID Number		G. State Facility ID		H. Facility's Phone
9. Designated Facility Name and Site Address <i>NWS High Road 6426 High Road Vacaville, CA 95687</i>			10. US EPA ID Number <i>CA09826140475</i>		I. Facility's Phone	
11. US DOT Description (including Proper Shipping Name, Hazard Class, and ID Number)			12. Containers	13. Total Quantity	14. Unit	
a. <i>R.G. Asbestos, 9, NA2212, PC III</i>			No. <i>0101</i>	Type <i>CM</i>	<i>0101</i>	<i>35 Y</i>
b.						
c.						
d.						
Additional Description for Materials Listed Above <i>Asbestos Removal from NWS High Road School</i>			K. Handling Code (See Wastes Listed Above) <i>03</i>			
15. Special Handling Instructions and Additional Information <i>EPA Region IX - 15 Hawthorne St. San Francisco, CA. Asbestos Removal Requirement 40 CFR 61 Bagged, Sealed Labeled.</i>						
16. GENERATOR'S CERTIFICATION: I hereby declare that the contents of this consignment are fully and accurately described above by proper shipping name and are classified, packed, marked, and labeled, and are in all respects in proper condition for transport by highway according to applicable international and national government regulations.  If I am a large quantity generator, I certify that I have a program in place to reduce the volume and toxicity of waste generated to the degree I have determined to be economically practicable and that I have selected the practicable method of treatment, storage, or disposal currently available to me which minimizes the present and future threat to human health and the environment; OR, if I am a small quantity generator, I have made a good faith effort to minimize my waste generation and select the best waste management method that is available to me and that I can afford.						
Printed/Typed Name <i>Nathan Gresham</i>		Signature <i>Nathan Gresham</i>		Month <i>03</i>	Day <i>21</i>	Year <i>05</i>
17. Transporter 1 Acknowledgement of Receipt of Materials			Printed/Typed Name <i>DELTA OILFIELD SERVICES INC.</i>		Signature <i>[Signature]</i>	
18. Transporter 2 Acknowledgement of Receipt of Materials			Printed/Typed Name		Signature	
19. Discrepancy Indication Space						
20. Facility Owner or Operator Certification of receipt of hazardous materials covered by this manifest except as noted in Item 19.			Printed/Typed Name <i>J. H. Fisher</i>		Signature <i>[Signature]</i>	
			Month <i>03</i>		Day <i>23</i>	
			Year <i>05</i>			

DO NOT WRITE BELOW THIS LINE.

Yellow: TSDf SENDS THIS COPY TO GENERATOR WITHIN 30 DAYS.  
 (Generators who submit hazardous waste for transport out-of-state, produce completed copy of this copy and send to DTSC within 30 days.)